



## **ATTACHMENT A**

CITY OF TAMPA WATER QUALITY MONITORING SUMMARY SUBMITTAL NPDES Permit  
FLS000008-004



# **MUNICIPAL SEPARATE STORM SEWER SYSTEM (MS4) NATIONAL POLLUTANT DISCHARGE ELIMINATION SYSTEM**

**NPDES Permit No. FLS000008-004**

## **WATER QUALITY MONITORING SUMMARY**

**Permit 4, Year 5 Submittal**

**Reporting Period:**

**April 1, 2021 to March 31, 2022**

**CITY OF TAMPA MOBILITY  
DEPARTMENT NPDES Permit  
No. FLS000008-004  
Municipal Separate Storm Sewer System (MS4) PERMIT  
Water Quality Monitoring Summary Assessment Submittal**

**Table of Contents**

<b>Section</b>	<b>Page No.</b>
Introduction	2
City of Tampa Monitoring Program Summary	2
MS4 Monitoring Activities & Agencies	3
Basin Assessments	4
TMDLs/Map	5

Attachments:

- I. EPC Monitoring Stations (map)
- II. EPC Monitoring Program Synopsis

**CITY OF TAMPA MOBILITY  
DEPARTMENT NPDES Permit  
No. FLS000008-004  
Municipal Separate Storm Sewer System (MS4) PERMIT  
Water Quality Monitoring Summary Submittal**

## **INTRODUCTION**

The Florida Department of Environmental Protection (FDEP) requires that the City of Tampa prepare and submit a water quality monitoring summary submittal as part of the Municipal Separate Storm Sewer System (MS4) Permit 4, Year 5 annual report. As outlined by FDEP, water quality monitoring is required in the Florida MS4 permits as a critical component to both the management and assessment of the effectiveness of the City's Stormwater Management Program (SWMP). The primary objective of the SWMP is to reduce pollutants discharged from the City's MS4 to waters of the state to the Maximum Extent Practicable (MEP).

The purpose of this document is to provide FDEP with the monitoring activities that support the above goals and objectives for the Permit 4 cycle years.

## **CITY OF TAMPA MONITORING PROGRAM**

The City of Tampa's water quality monitoring program for this permit is primarily established through an inter-local agreement with the Environmental Protection Commission of Hillsborough County (EPC). The Agreement states that EPC will assist in fulfilling responsibilities with respect to the reduction of surface water pollution including, but not limited to, ambient water quality monitoring, and elimination of illicit connections and discharges.

Since 1972, the Environmental Protection Commission's (EPC) ambient monitoring program has monitored receiving waters for a variety of parameters with the expressed intention of determining their conditions and trends (see map, Attachment I). The updated water quality program synopsis is provided in this document (Attachment II). Details on the protocols for sampling collection and storage procedures, a complete list of surface water analytes, and descriptions of frequency and locations of sampling stations are included.

Water quality data is being collected by the EPC in Hillsborough County and is uploaded to WIN. The City renewed the inter-local agreement in 2018 and continues to provide support to the EPC.

## **MS4 PERMIT MONITORING ACTIVITIES & AGENCIES**

Water quality monitoring data is generated by several parties, including the EPC, and other agencies: the Tampa Bay Nitrogen Management Consortium (TBNMC), the Southwest Florida Water Management District (SWFWMD), the United States Geological Survey (USGS), and the Florida Department of Environmental Protection (FDEP).

In order to meet the monitoring requirements for the City's current MS4 permit, the water quality data is derived from activities conducted by other agencies overlapping our jurisdiction. The City of Tampa's monitoring plan includes the use of existing monitoring data and activities conducted by other agencies as well as contractual work in order to maximize limited resources.

Any additional monitoring activities in the Tampa Bay area are conducted by the Tampa Bay Estuary Program and/or Tampa Bay Nitrogen Management Consortium. The City of Tampa continues to be a partner agency with the Estuary Program and will participate in and report on relevant monitoring efforts undertaken by the Estuary Program.

Finally, to maintain a dialogue and interagency cooperation, the City participates in meetings on monitoring and water quality with representatives from several agencies. The City is currently active in several bay area committees and attends regular meetings for the Tampa Bay Nitrogen Management Consortium, Agency on Bay Management, the Hillsborough River Technical Advisory Committee, and the Tampa Bay Area Educational Task Force Committee. This effort is expected to continue in order to contribute to the decisions on the water quality in the Tampa Bay/Hillsborough River watersheds.

## **BASIN ASSESSMENTS**

A long-term analysis of data and local knowledge allows for better adaptive management of changing water resources. The monitoring data and analysis reports support that the rivers and bays in Tampa indicate an improvement in water quality conditions. The waterbodies in the City of Tampa's jurisdiction and surrounding watersheds reflect the improved surface water quality (Figure 1).

## Tampa Bay 1974 - 2021

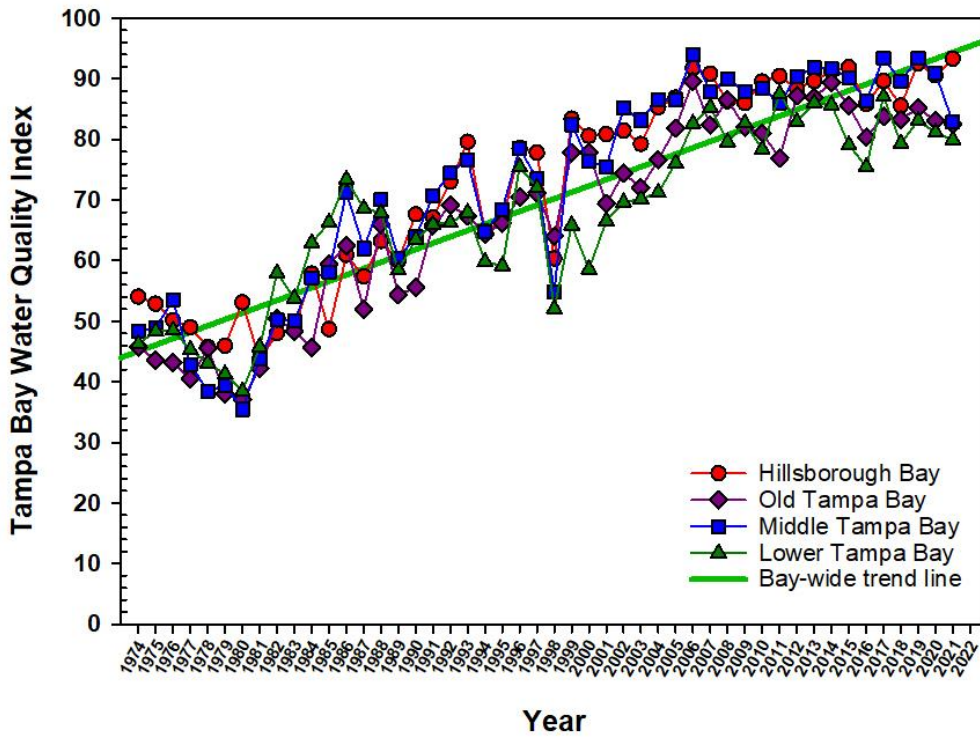


Figure 1. Tampa Bay Water Quality Index historical trends by bay segment

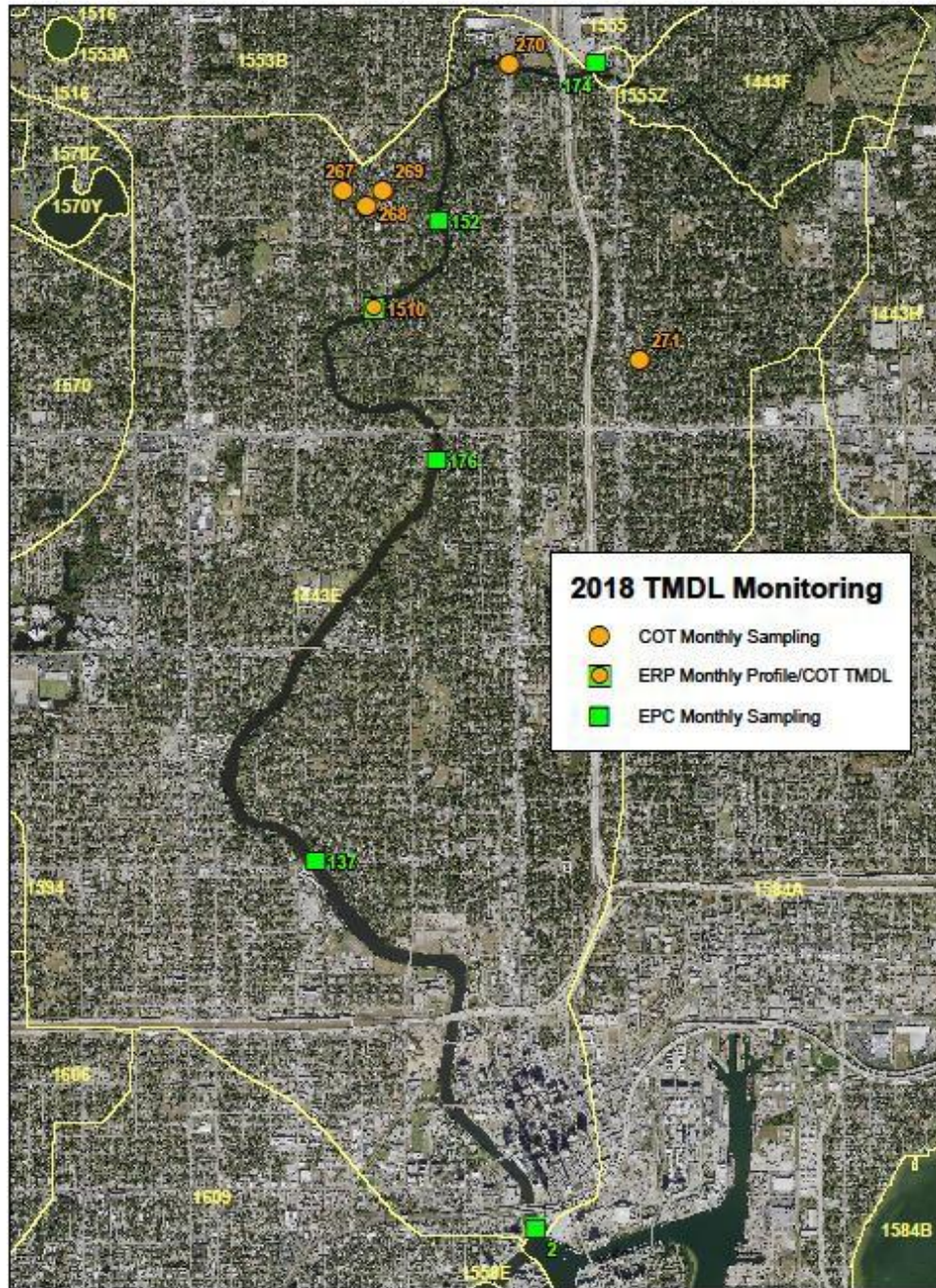
## **TMDLs, IMPAIRED WATERS MONITORING, REASONABLE ASSURANCE & BMAPs**

The City will continue to rely on monitoring efforts used to establish the baseline for TMDL's which include the EPC's monitoring efforts, USGS, SWFWMD, TBEP and FDEP sites.

The City also collaborates with the Tampa Bay Estuary Program (TBEP) in overseeing the Reasonable Assurance program for the Bay.

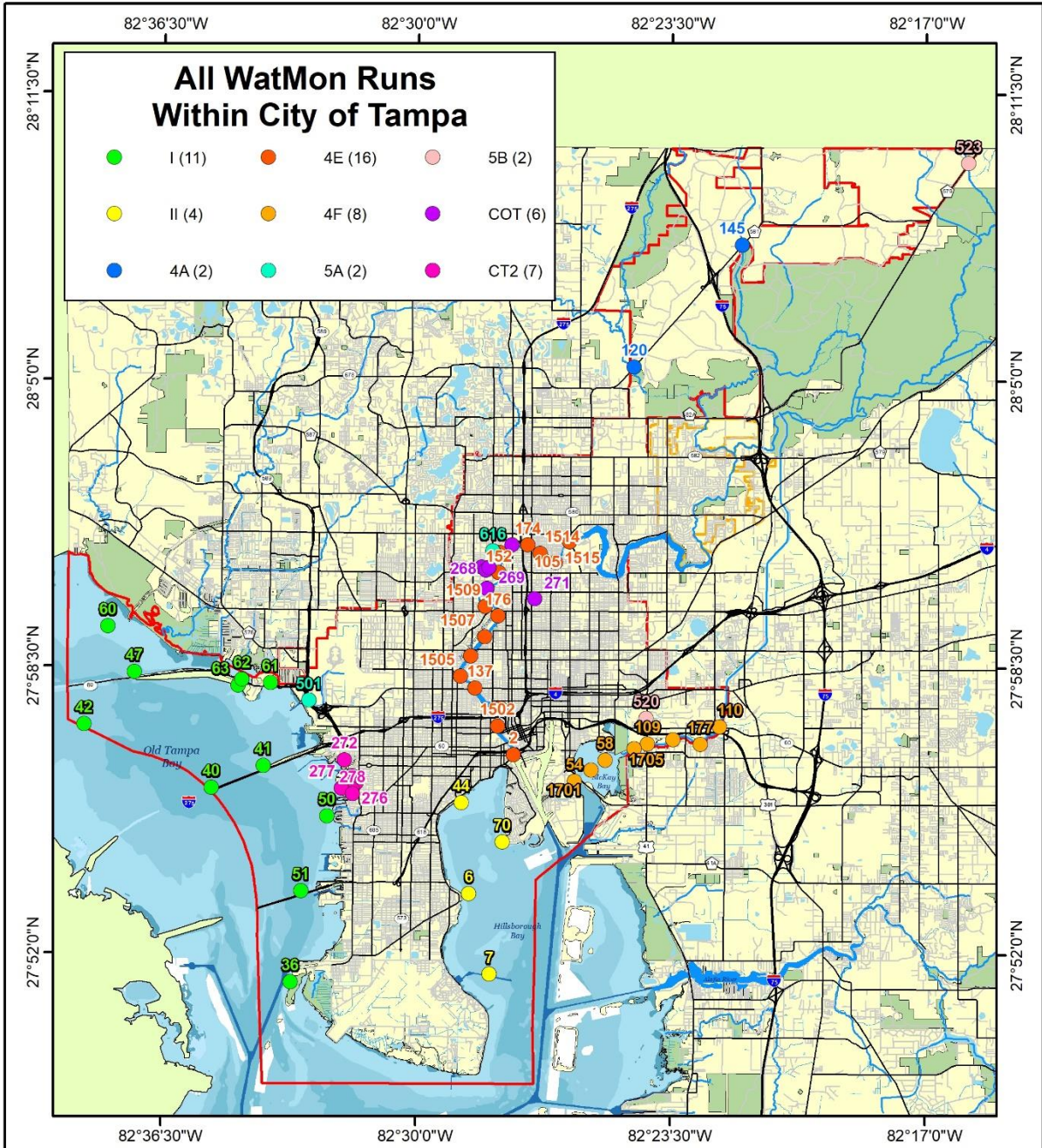
The City of Tampa added five (5) additional stations to monitor the #1 priority WBID 1443E. The Environmental Protection Commission (EPC) started sampling at additional stations in September 2018. Figure 2 shows the EPC water monitoring stations within WBID 1443E sampled for this study. The City of Tampa submitted the results and summary in last year's TMDL implementation plan WQP4Y4 2020-21 report.






**Figure 2. EPC Lower Hillsborough River (WBID 1443E) monthly monitoring sites**








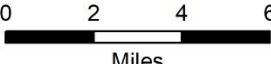
Environmental Protection Commission  
Hillsborough County  
3629 Queen Palm Drive  
Tampa, FL 33619  
(813) 627 2600

Water Monitoring.V3.mxd




Map Created By: Kevin Campbell  
September 20, 2021  
Geographic Coordinate System: WGS\_1984

## Hillsborough County, Florida Water Quality Monitoring City of Tampa Stations (58)



Miles



For Reference Only