



TAMPA PALMS

NEWSLETTER

March -April 2013

Tampa Palms Country Club

A Glittering Private Oasis Gets Even Better

Continuing the tradition of investing in Tampa Palms set in motion by City Plaza, the Tampa Palms Country Club will kick-off a million dollar investment in the renovation of the clubhouse dining areas.



This most recent project follows the renovation of the 25 luxury guest suits which was completed last year.



Work will commence in a few weeks. Dave Kupstas, Tampa Palms CC General Manager, advises that the club will continue to operate during the construction and that the staff has planned

extensively to minimize guest/member disruptions during the work.

During a members' "town hall" on Feb 26th, ClubCorp's Vice President of Agronomy, Doug Miller, outlined yet another project- course enhancement - and Dave pre-viewed the dining and socializing area improvements.

Dave Kupstas said that ClubCorp is undertaking these many projects, which are considerable magnitude, in order to make certain the Club better serves the Members today and updates the Clubhouse for the future and emerging requirements of a "wired" Membership.

This large-scale undertaking will literally reinvent the Member dining experience at the Club, with the overall scope of the project to include:

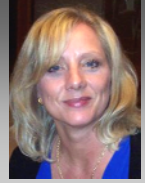
- Updated lobby and entrance
- New expanded dining area including casual areas and community tables
- New bar area perfect for socializing
- New outdoor patio dining area with fire pits
- New high-tech media lounge - catch the game or watch current events
- State of the art audio visual through out the entire area

The renderings below provide a glimpse at what is coming. Drop in and see the plans: let the staff share their excitement and what is "just around the corner"





News From the TPOA



Tennis Season Revs Up

Tampa Palms is fortunate to have substantial tennis court availability.

- There are three courts at Compton Park.
- There are four courts at Hampton Park.

The tennis and basketball assets are heavily used by Tampa Palms residents, especially in the late afternoon and early evenings. Even if the courts appear unused when you arrive at the park, please do not just “walk on”. Sign in at the office at Hampton or the clubhouse at Compton, then go to the courts.

Who To Call For Reservations

To reserve a tennis court or make inquiries about the parks you may call the park attendants on duty.

Compton Park 972-0897
 Hampton Park 972-5699
 River Park 972-6241

For information regarding reservations for the General Purpose room or any of the park pavilions, please call Jo Ann Conrad at 977-3337 during business hours (9-5 Mon-Fri).



Tennis Court Rules & Regulations

1. All players must wear non-marking tennis shoes and appropriate tennis or racquet ball attire.
2. Courts are for tennis only and may not be used for any other purpose. Roller skates, skateboards, scooters, bicycles, lacrosse equipment etc. are strictly prohibited.
3. Courts are for the exclusive use of Tampa Palms residents in Area’s 1 & 2 and members (Hampton). The courts are also open to any guest playing with a Tampa Palms resident or member. That guest may be a coach.
4. Owners/members may bring three guests to play tennis to facilitate doubles play. Only one court may be used: there must be a resident/owner/member on every court.
5. Owners may use the courts only one and a half hours a day. **Owners must leave the courts promptly at the end of their reservation.** If no one is scheduled or waiting to play, the park attendants will reassign a court for continued play.
6. Reservations start on the hour or the half hour and are void if not used by 15 minutes after reservation time.
7. To discourage ineligible use of the courts, **all owners/members must sign-in before each session and will be assigned a court for use.**
8. Players may not make comments or express complaints to or about other players, or approach other players to trade courts or times. Any such requests should be discussed with the park attendants.
9. Reservations are accepted from owners no more than 24 hours in advance. Reservation requests may be left on the voice answering system but if left more than 24 hours in advance of the requested time, the reservation request will not be honored.

When making court reservations, owners or members should provide their name, phone number and address. All players should have Tampa Palms appropriate ID when checking into the facility.



The Bank of Tampa

BANKING • INVESTMENTS • TRUST

Tampa Palms Office

Leslie N. McCabe-Holm, CFP®
 Banking Office Manager

James A. Schoolfield
 Assistant Vice President, Commercial Banking

15302 Amberly Drive
 813-998-2620

www.bankoftampa.com

Member FDIC



Leaping Lizards– He Is Back

Chiles 5K Race & 1 Mile Fun Walk/Run



Support Chiles Elementary, Have Fun & Stay Fit

Chiles Elementary again presents *the most fun you have ever had on a Saturday in Tampa Palms....*

Follow the *Lovable Leaping Lizard* to a family fun and fund raiser for Chiles Elementary - one that combines all the best:

- A healthy adventure for the young and not-so-young.
- A way to help one of our Tampa Palms schools meet its objectives.

The race is *out and back* from Primrose to Commerce, over the BRAND NEW "New Tampa Gateway Bridge" and return. The new bridge includes generously sized, and beautifully landscaped pedestrian paths on both sides of the roadway.

The weather is beautiful, the location excellent and there is plenty of well protected free parking.

Registration is a breeze

On Line - www.active.com (Use keyword Lizard Tail)

In Person

- Race day - same as start of race- at TP Professional Park 17427 Bridge Hill Ct. (On race day there is a \$5 increase in race entry fees.)

Free and ample parking at the New Tampa Professional Center Primrose Lake Blvd (off Commerce Park Blvd)

For more information and race routes, visit online <http://chiles.mysdhc.org>



Photo From 2012 Race

Be The First To "Race" Over the Gateway Bridge

This is the only race in Tampa Palms North and the first race of any kind to use the newly opened New Tampa Gateway Bridge which will only be open a few weeks when the race is held.



The Lizard Tail 5K Race & 1 Mile Fun Run/Walk

When: Saturday, March 23rd

7:30 AM Start For 5K

8AM For 1 Mile Run/Walk

Where: Race Start and Finish

Tampa Palms Professional Suites

17427 Bridge Hill Ct. Tampa, Florida

Race Fee: \$25 for the 5K;

\$20 For Mile Fun Walk

Awards: Overall Male and Female Winners

- Trophy
- Running Shoes (Running Center gift certificate with a value of \$120.)
- House Cleaning Service (Heavenly Maid gift certificate estimated value up to \$280)

All who participate in 5K will be entered into a drawing for the following:

Two Running Center gift certificates. Value \$120 each
Two Heavenly Maid gift certificates. Estimated value up to \$280.

• **To be raffled:**

- An Adult "Giant" Cruiser Bike which has been generously donated by Outspokin Bicycles of South Tampa.
- A kids Trek bike, generously donated by Oliver's Bike Shop.



Attack Squirrels?

At least so far Tampa Palms does not have marauding packs of squirrels who are bent on causing neighborhood mayhem but a recent incident with a couple of too-friendly critters in one of the Tampa Palms parks brought to light the very real problem of feeding wild animals.



Please do not feed squirrels or other animals when in Tampa Palms parks. The animals lose their fear of humans and expect food.

They can jump on or scare small children and become a general annoyance.

Never feed the alligators!



It is especially dangerous to feed alligators. Alligators are instinctual feeding machines with brains weighing only 8 or 9 grams (teaspoons-size) This lack of brain power means there is no such thing as a "nice alligator". If it is hungry, an alligator will eat anything it is not afraid of that moves.

It is actually against the law in Florida to feed wild animals. The law includes the big and dangerous animals, such as bears or alligators, but since 2002, it has also been against the law to feed even small animals such raccoons, foxes or sand hill cranes in Florida.



For the safety and enjoyment of all who use the Tampa Palms parks, please make certain that you do not feed any wild animals and that your children do not "share their treats" with the critters in the parks.

Mayor Opens New Tampa Bridge



Mayor Buckhorn and Public Works Administrator, Mike Herr, officially opened the New Tampa Gateway Bridge on Feb 27th.

In the 80s planners never believed that New Tampa could develop into such a thriving and successful community. In the process, they underestimated the infrastructure needed for traffic.



More recently, the present and previous administrations have tried to deal with the situation they inherited with skill and sensitivity.

This bridge is a long awaited neighborhood feature; one first conceived as a neighborhood connector between Tampa Tech East (West Meadows) and Tampa Tech West (the businesses and restaurants in the Point and the professional center). It was even designed with the help of local high school students.



But as it opens in 2013, its benefits are finally being realized.

A family in Hunters Green can take their child to a ball game at the New Tampa Regional Park or gymnastics classes at the Rec Center, safely, quickly and directly. A tired mom in Huntington-Tampa Palms can round up her three girls for a *dinner out* and a first showing at the Muvico and still make bedtimes.

Many thanks to Mike Herr, City Administrator of Public Works, for placing Interstate and County route markers (see above) on a City road to reduce the likelihood that this bridge will add traffic through the Tampa Palms neighborhoods.



Tampa Palms Women's Club Makes March & April Fun

Yard Sale

Fashion Show

Yard Sale

Compton Park
Saturday, March 23rd
9:00 AM to 1:00 PM

Proceeds Go To USF
Scholarship Fund

Bake Sale

The TPWC Community Yard Sale offers a great way to put your Spring Cleaning efforts to work for you.

Selling your retreaded treasures has never been easier or safer:

- ✓ Reserve a spot for \$15.00 and bring your own table. (Applications should be received by Saturday March 16)
- ✓ To make it even easier, add a table to your rental for \$15.00 more.



Reservation form and more information is available online at <http://tampapalmswomensclub.com>.

If you would like to donate your former treasures, please drop them off at Compton Park on Friday March 22, 2013 from 1PM to 6PM.

If there are items that you wish to donate but they are quite large, give the Women's Club a call at 615-9600 and the club will pick the donated items for you.



Beannachtaí na Féile Páraic Oraibh!

The March Activity on the 21st, 11:00 AM, will be an Irish Celebration in honor of St. Patrick's Day!



The event will be right in the clubhouse at Compton so travel is not a concern. An Irish story teller will regale us with her tales of Ireland as we dine on Irish Stew (prepared by a resident Irish lass, Terry McQuirk) and Irish Soda bread (prepared by Ginny Welch).

\$12 per person will cover the cost of lunch and the story teller. Two or three may want to combine efforts for the dessert or salad to share. Sign up at the March meeting: a headcount is needed to prepare lunch.



There will be slide show to play during lunch using Terry's pictures from Ireland. If you have digital pictures you would like to include please email them to typhoonerry@hotmail.com.

Tampa Palms Women's Club

Fashion Show and Luncheon

Thursday, April 11th
10:30 - Social

Noon - Luncheon & Show
Tampa Palms Country Club



Tickets are \$24 and include fashions show, door prizes, luncheon and donation to the OASIS Network.



Reserve your ticket by dropping off your check at Compton Park TPWC mailbox or call Edie Dutz or Judy Alkow for more information (903-9034).



Sidewalk / Bike Path Maintenance



Tampa Palms Pedestrian Walkways

There are pedestrian walkways within Tampa Palms

- Along the boulevards (Tampa Palms / Amberly / Compton) with no adjacent homeowner
- On the village streets in front of resident homes.

With the exception of the gated villages, all of the walkways (concrete or asphalt) are located in the City of Tampa's public right of way (ROW).

The public rights of way along the boulevards (Tampa Palms / Amberly and Compton) contain two types of pedestrian paths, the concrete sidewalks on the north / west sides of the streets and the asphalt bike path / walking trail on the south / east sides of the streets, Both of these paths are within the City ROW.

Bike Path Maintenance

Under a decades old agreement with the City, the City will repave and repair the bike path, one mile per year. The most pervasive damage to the paths is caused by tree roots.

The trees that cause this damage are :

- City-mandated street trees
- An incredible asset to the stateliness and beauty of Tampa Palms
- In many cases grand oaks - subject to substantial legal protections

The CDD works with the City contractor to remove asphalt and where possible trim tree roots or build up the path over the roots. Pictures from the FY 2011-12 work are below.

In late Feb the CDD conferred with Ken Holton, the City's Engineer/Manager with oversight for paving, regarding the FY 2012-13 plan and the areas for attention are being mapped at this time. The concentration will be on the sites from across from TP Elementary to Yardley, with a few other needy areas included.



Concrete Sidewalk Improvements

Concrete sidewalks are located both along the boulevards and in all of the villages, in front of resident homes in Tampa Palms.

Even in these times of municipal budget shortfalls, the City has allocated funds for repair of sidewalks which are damaged by tree roots, as well as, upgrades to add pedestrian crosswalk markers. The picture to the right shows improvements to the sidewalk at the Tremont entrance completed in 2012.



The City struggles with the cost to make these repairs and will be testing a process used by Hillsborough County involving a sidewalk scabblers to grind raised edges.

Properly done, scabblers can achieve results that are:

- Perfectly flush with the adjacent panel
- Corrected for the full width of the panel

There will be a scabblers demonstration in early March. This process may be more useful along the boulevards as the final result does expose the aggregate.

Every Spring the CDD compiles a list of the boulevard areas in need of attention and forwards that list to the City. The City inspects the areas of damage against the standard for required repair and marks the areas deemed in need. Repairs follow according to City schedules and budget availability.

What Can You Do If You Observe A Damaged Sidewalk?

- Make a "sidewalk damage report" to the City's Customer Service at www.Tampagov.net
- Call the Sidewalk Maintenance Supervisor, Jan Washington, at 274-8303 and report the area.
- Call the CDD at 977-3933 and report the location, the CDD will forward the report to the City.
- Email the CDD at CDD.Tampa@verizon.net



Common Sense and Vigilance To Protect Your Landscape Investment



Low Aquifer Leads To Watering Restrictions

For Tampa Palms owners who have kept their lawns in condition during this semi-winter, the new level of restrictions will offer no serious impediment to landscape maintenance.

Tampa Palms is under stricter watering restrictions from the City of Tampa. Landscape may only be watered once per week.

Addresses Ending in	Irrigate On
0 or 1	Monday
2 or 3	Tuesday
4 or 5	Wednesday
6 or 7	Thursday
8 or 9	Friday

Watering on the designated day is allowed once between midnight and 8 a.m. or 6 p.m. and midnight.

Hand-watering and micro-irrigation of flower beds, shrubs and other plants (other than lawns) can be done on any day, if needed, but is limited to allowable watering hours.

New lawns and plants are permitted a 60-day establishment period.

On days 1-30, they may be watered any day of the week.

During days 31-60, they may be watered three days a week.

- Even-numbered addresses may water on Tuesday, Thursday and Sunday.
- Odd-numbered addresses may be watered on Monday, Wednesday and Saturday.

The fountains (Turnbury Wood, Amberly Place and Palm Lake) should be operated only 4 hours per day.



The Reserve fountains will use reclaimed water for augmentation and will continue to operate on the normal schedule.

The stormwater pond fountains, which provide necessary water quality benefit, will be operated as needed.

Other Water Uses

Car washing is limited to once per week on the designated watering day for the location. Commercial car washes are allowed to operate so they offer a better option for a number of reasons-water use, the cost of potable water and the concerns for runoff.



If a fountain or other aeration feature is an integral part of the circulation system for a swimming pool, it is permitted to operate.

Is Your landscape Ready For Watering Restrictions?

Drought tolerant landscape, reduction of lawn space and the use of low volume or drip irrigation can make the look of your home continue to shine, even when water use reductions are ordered.... and they will continue.

The cul de sacs in Tampa Palms are City-owned, though the CDD provides the landscaping. Unfortunately the CDD irrigation does not reach the cul de sacs and potable water is used on them.



The CDD is migrating to a "Florida Friendly" planting palette, the elimination of turf and installation of low volume irrigation.



Concerns were raised at a recent TPOA neighborhood meeting that Florida Friendly / drought tolerant landscape options were stark and did not meet the expectations of lush landscape.

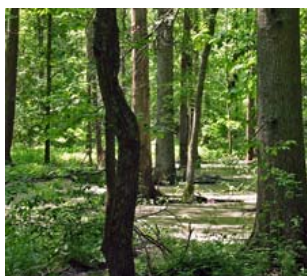


That is not true for the cul de sacs and does not have to be true. For homes elimination of turf and intelligent plant design can take many forms. For more information go online to see the plants that can be used and other tips.

<http://www.floridayards.org/>

Tampa Palms Protected Wetlands

Tampa Palms lies in convergence of three important watersheds, the Cypress Creek, the Trout Creek and the Hillsborough River watershed.



The Tampa Palms wetlands are a resource relied upon well beyond the community boundaries.

The Tampa Palms wetlands are protected– no matter if the wetlands are on private property or common areas.

The wetlands are protected by:

- The City of Tampa
- The Hillsborough County EPC
- The State of Fl. EPA

Occasionally, and in special cases, the EPC or City will permit removal of dead vines or trees. Live and protected trees should not be removed.

Trees, even if not located in the wetlands, may be protected by City code. All trees 5” and over in trunk diameters that are located on private property are protected in the City of Tampa, and permits for removal must be obtained prior to tree removal. All cypress and mangrove trees, regardless of size, require a permit for removal. Trees over 34” may be designated grand trees and have additional protections.

Recently a Tampa Palms owner removed more than 60 trees without appropriate agency approvals and without making the required application to the TPOA RMC .

Be sure to apply to the TPOA RMC; the TPOA can make owners aware of the requirements and help avoid expensive enforcement outcomes. For more information go online to <http://www.TPOA.net/Deed.html>.

Tampa Palms Deed Restrictions

Quick Links

Tampa Palms Rules & Regulations (CCRs)
Architectural Review Manual
Return To TPOA

Deed restrictions are not a set of arbitrary rules - they are an assurance that property values in Tampa Palms will remain high. The TPOA office staff provides the enforcement of deed restrictions on behalf of the Board of Directors.

The most frequent subjects for deed restrictions violations include:

- Parking and Garages
- Animals and Pets
- Fences and Walls
- Nuisances
- Play Equipment

Your may view the CCRs on line by clicking the Community Rules link on the right. You may also see obtain a copy of the documents at the TPOA office during regular business hours.

Getting Ready ... SAT & FCAT's In Mar & Apr

Tampa Palms Elementary and other school students will be taking the SAT and FCATs in March and April. Providing the best opportunity to “strut their stuff” on these tests is important to the students and their families.

SAT-10 Testing Schedule

TPE’s third, fourth, and fifth graders will take SAT-10 on March 26th-March 28th. The first and second grade students will take the SAT-10 on April 2nd-April 12th. On testing days, it is very important that children arrive at school on time, are well rested, and eat breakfast at home or at school.



FCAT Testing Schedule



Our third, fourth, and fifth grade students will take the FCAT on April 15th-April 26th. For our third, fourth, and fifth grade students, it is very important that children arrive at school on time, are well rested, and eat breakfast at home or at school.

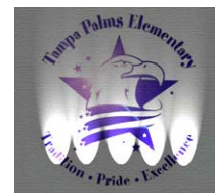
It is also vital that all classroom disruptions are minimized. For that reason per Ms. Keenan; on SAT-10 and on FCAT testing days, there is to be no movement in the halls. Parents interested in volunteering on testing dates must first confirm that the teacher isn't testing and arrive in the classroom by 8:00 AM and stay in the classroom until testing is over or arrive at school when testing is over around 11:30 AM.

Some suggestions for parents and students:

1. **Get a good night's sleep** before the test. Staying up late increases anxiety and interferes w/ thinking
2. **Eat for Success.** A hearty breakfast with seven to ten grams of fiber will keep children from getting jittery from a sugar high o, bottoming out later when insulin goes up.
3. **Relax.** If children are too nervous, they'll forget what they know. Ms. Keenan suggests stretching and breathing deeply to focus the mind.
4. **Wear comfortable clothes.** Pants shouldn't be so tight they keep the child from breathing fully. The brain needs oxygen.
5. **Drink plenty of water.** This is another way to keep alert.



Tampa Palms Elementary



From the Desk of Ms. Keenan, Principal

During the month of March and April we enter fully into the season of standardized testing. We look at standardized testing as ***Our Time to Shine!***

On testing days it is especially important that you child arrive to school on time, is well rested, and eats breakfast either at home or at school. On testing nights, you may want to consider reducing extra-curricular night events so that you child is ready to “show all they know”!

TPE Receives Technology Improvement Grant



TPE is delighted to announce that Tampa Palms has received a matching grant to increase the instructional technology in our school.

Thanks to our wonderful PTA and the generous \$7,500 contributed towards the grant, TPE received a matching \$7,500 from the Hillsborough Education Foundation for a total of \$15,000 to be used towards enhancing the instructional technology in our classrooms.

A special thanks to our incredible PTA and Mrs. Hopple, our lead grant writer, along with Mrs. Ciccarello, Mrs. Murtha, and Mrs. Boghhosian who contributed greatly to the writing of the grant.

Flight of the Eagle

Flight of the Eagle will be held on Monday, April 15th-Friday, April 19th after FCAT Testing. Our theme this year is *Flight of the Eagle-Adventures Around the World.*

Approved volunteers are welcome to come and assist with punching lap cards.

As a reminder, non-elementary aged children are unable to attend/ participate in this event.

The Flight of the Eagle closing ceremony will be on Tuesday, April 30th at 8:30am. Parents are welcome to come to this special event.



Stem Fair Winners Celebrated (Science, Technology, Engineering & Math)

Tampa Palms is very proud of the outstanding representatives to the District STEM Fair on February 13, 2013.

Many thanks go to Mr. Oliver & Ms. Carroll for their extraordinary work organizing the Science Fair for TPE.

Grade	Teacher	Student- Project	Award
K	Mrs. Kennedy	Class (Which Container Keeps Frozen the Longest?)	Ribbon
1	Mrs. Tallarico	Class (Which Bottle of Water Will Absorb the Most Heat From the Sun?)	Ribbon
2	Ms Choronenko	Class (Can the Design of Paper Airplane Make It Fly Farther?)	Ribbon
3	Mr. Oliver	Ben Small (Got Pure Water?)	Superior
3	Mrs. Lee	Ariana Arroyo (Naked Feet or Armored Toes?)	Merit
4	Mrs. Carroll	MinJy Kim (Does the Car Screen Affect the Temperature Inside the Car?)	Merit
4	Mr. Oliver	Enrique Cortes (Is Battery Drain...A Money Black Hole?)	Superior
5	Mr. Oliver	Sierra Eckhardt (123... Snap)	Merit
5	Mr. Oliver	Briana Orbegoso (Stay Cool With Jeans)	Merit
5/Group	Mr. Oliver	Austin Anderson & Alexandra Paglieri (Ions at Work)	Excellent
5/Group	Mr. Oliver	Isabella Park & Shannon Chen & Lily Farzaneh (Do You Remember)	Superior
5/Group	Mr. Oliver	Prithvi Adipudi & Marlon Edwards (Strong Structures)	Merit
5/Group	Ms. Paul	Livan Cruz & Jacob Rudes (Rust-0-Ramma)	Merit



New Tampa AM Rotary Club

The weekly club breakfast meeting of the **New Tampa AM Rotary** are held on Friday mornings at 7:00 AM at the Tampa Palms Golf and Country Club, 5811 Tampa Palms Blvd.

Upcoming speakers include:

March 1: "New Tampa Rotary Speech Contest" Nick Karatinos, Esq. club member and local attorney will facilitate the program.

March 8th : Woodland Johnson, Principal Mort Elementary School will speak on the topic of "Strengths and Opportunities"



March 15th: Scott Williams, Sr.V.P. Men's Health Network will speak on the topic of "Heart Health".



March 29th, David P Scott will speak on the topic of "Financial Literacy - Choices for a Better Life"

April 5th Ron Jarabak, USO Tampa Bay Leadership
Update: The History of the USO in Tampa.

April 12th Hunter Chamberlain, will speak on the topic of "An Introduction to American Constitutional Law".



April 19th Kun Shi, Director of the USF Confucius Institute will speak on the subject of "Approaches to Understanding China".



For further information about the New Tampa Rotary you may visit our website at www.newtamparotary.org or contact Eric Longphee at 375-2663

Community Director: Jo Ann Conrad
Property Manager: Bonnie French

16101 Compton Drive M-F 9 AM - 5 PM

Phone: 977-3337
 Fax: 978-8067
 E-Mail: tpoamail@aol.com
 Web Site: www.tpoa.net

Board of Directors

Bill Edwards, President 972-4238
 Dudley Bryant, Vice-President 977-7630
 Barbara Shimer, Secretary 971-8063
 Jake Schoolfield, Treasurer 998-2620
 Marianne Trubelhorn, Director 977-3337

CDD

16311 TP Blvd. West
 Maggie Wilson, Consultant
 Phone: 977-3933
 Fax: 977-6571
 E-Mail: cdd.tampa@verizon.net

CDD Board of Supervisors

Gene Field 977-1162
 Patty Maney 977-7129
 Andy Miller 979-0225
 Randy Marlowe 866-1091
 Bill Shimer 971-8063

One Source (Landscaping)

Joe Laird, Area Manager 267-1756

Tampa Palms Parks

Compton Park 972-0897
 Hampton Park 972-5699
 River Park 971-6241

Police & Fire

911

Non-Emergency Police 231-6130
 Non-Emergency Fire 223-4211

Local Schools

Tampa Palms Elementary 975-7390
 Lawton Chiles Elementary 558-5422
 Liberty Middle School 558-1180
 Freedom High School 558-1185

Miscellaneous

Street Repairs 622-1940
 TECO 223-0800
 Waste Management 621-3053
 Water Department 274-8121
 New Tampa Rec. 975-2794
 Stormwater (Floods or Dumping) 622-1901



Activity Calendar



MARCH 2013

Sun	Mon	Tue	Wed	Thu	Fri	Sat
Daylight Saving Time Begins March 10 Spring Break - No School March 11-15 No School March 29					1 5-10 Private Event	2 11-4 Private Event 5-10 Private Event
3 9-12 Private Event 1-4 Private Event 4-8 Private Event	4 9-11 Private Event 1:30-3 Private Event	5 6-9 CHESS	6 10-12 Private Event 3-5 Private Event 6-9 Fly Fishing	7 10-2 Women's Club	8 12-4 Private Event 5-10 Private Event	9 11-4 Private Event 5-10 Private Event
10 DST 9-12 Private Event 1-6 Private Event	11 9-11 Private Event	12 12-4 Les Girls Art 5-9 Private Event	13 3-5 Private Event 6 PM CDD Meeting	14 10-2 TPWC Bridge 6-9 Private Event	15 5-10 Private Event	16 10-3 Private Event 5-10 Private Event
17 9-12 Private Event	18 9-11 Private Event 1:30-3 Private Event 3:30-5:30 Boy Scouts 6:30-8 Boy Scouts	19 1-3 TPWC Board 5 TPOA Board 6-9 Chess Club	20 10-12 Private Event 3-5 Private Event 7-9 Faircrest Annual Meeting	21 10-2 TPWC Special Event	22 8-1 Private Event 1-6 Private Event 6-10 Private Event	23 9-1 YARD SALE 5-10 Private Event
24 9-12 Private Event 1-6 Private Event	25 9-11 Private Event 1:30-3 Private Event 7-9 Faircrest HOA	26 9 -12- Les Girls Art 6-9 Chess Club	27 10-12 Private Event 3-5 Private Event 6-9 North Tampa Arts	28 10-2 TPWC Bridge 2:30-7:30 Private	29 10-3 Private Event 5-10 Private Event	30 10-4 Private Event 5-10 Private Event
31 9-12 Private Event 2-7 Private Event						

APRIL -2013

	1 9-11 Private Event	2 6-9 Chess Club	3 10-12 Private Event 3-5 Private Event 6-9 Fly Fishing	4 10-2 Women's Club	5 9-12 Children Music 1-4 Private Event 5-10 Private Event	6 5-:10 Private Event
7 9-12 Private Event 3-8 Private Event	8 9-11 Private Event 3:30-5 Boy Scouts 6:30-8 Boy Scouts	9 12-4 Les Girls Art 6-9 Chess Club	10 10-12 Private Event 3-5 Private Event 6 PM CDD Meeting	11 10-2 TPWC Bridge	12 9-12 Children Music 12 -5 Private Event 5-10 Private Event	13 8-11:30 Private Event 12-4:30 Private event
14 9-12 Private Event 1-6 Private Event	15 9-11 Private Event 3:30-5 Boy Scouts 6:30-8 Boy Scouts	16 1-3 TPWC Board 5 TPOA Board Mtg 6-9 Chess Club	17 10-12 Private Event 3-5 Private Event	18	19 9-12 Children Music 5-10 Private Event	20 5-10 Private Event
21 9-12 Private Event 1-6 Private Event	22 9-11 Private Event 3:30-5 Boy Scouts 7-9 Faircrest HOA Mtg	23 12-4 Les Girls Art 6-9 Chess Club	24 10-12 Private Event 3-5 Private Event 6-9 North Tampa Arts	25 10-2 TPWC Bridge	26 9-12 Children Music	27 5-10 Private Event
28 9-12 Private Event 1-3 Private Event 3-8 Private Event	29 9-11 Private Event	30 9-2 Private Event 6-9 Chess Club				

Tampa Palms CDD Meeting Agenda

**Marche 13th at 6:00 p.m.
Compton Park Recreation Building
16101 Compton Drive, Tampa, FL 33647**

1. Roll Call
2. Pledge of Allegiance
3. Strategic Planning
4. Public Comments
5. Board Member Discussions
6. Project Updates
 - BB Downs Update
 - Park Reviews
 - LED Lighting
7. Misc. Board Business
8. Public Comments
9. Board Member Discussions
10. Adjourn

A Great Day For The River And The Irish

Mayor Bob Buckhorn will host the second annual Mayor's "River O'Green" in celebration of St. Patrick's Day at the Curtis Hixon Waterfront Park.

Saturday, March 16, 2013
11 a.m. to 4 p.m.

The City of Tampa, in partnership with Grow Financial will dye the Hillsborough River Kelly green between Cass Street Bridge and Kennedy Bridge.

There will be food and beverage venders (yes Guinness is available) and should be a fun time for all. For more information go on-line to http://www.tampagov.net/appl_tampa_announcements/ViewRelease.asp

