



TAMPA PALMSTM

NEWSLETTER

July 2016

Bruce B Downs Widening Moving Into Final Phases

Improvements Around The Corner



Even though the changes to the Area 1 exit caused by the BB Downs widening project were known for many years, once the trees were down it was a shock to all - neighbors and visitors alike.



The designers have fashioned a vision to return the Signature Tampa Palms *look* that includes strategically placed trees along with brick monument pillars connected by black fencing that will tie into the design of the entry monuments.

Below is a photo of the Area 1 entry with graphics depicting the planned improvements.

What Is Coming Next

With north and southbound traffic sharing the west side of the roadway, the contractor is proceeding to:

- Construct the northbound bridge at Cypress Creek
- Install new sewer facilities (east side) – the green pipes
- Install new drainage facilities (east side) – the black pipes
- Create three outside lanes for northbound traffic.

When the lanes are finished, northbound traffic will move to the new lanes and the southbound traffic will remain where it is as the contractors:

- Construct the two center southbound lanes
- Construct the remaining northbound lane
- Construct the median improvements and turn lanes

Construction Completion by mid 2017.





News From the TPOA

School Is Out For The Summer

PLEASE DRIVE CAREFULLY. Summer is a wonderful time for everyone – especially our children.



No matter how often or how well mom and dad instruct little ones about pedestrian, auto and bike safety, excited children running to meet friends can sometimes forget it all for the moment or two that it takes for tragedy to strike.

It is up to us to keep a careful eye out - even more so near the many places where children gather in during the summer, like Compton Park, the Country Club, the YMCA, River Park, Amberly Park and Hampton Park.



A few tips especially for bicycling...

- Make certain that children have and wear a helmet.
- Check the bicycle equipment: are the tire properly inflated, are the brakes working properly.
- Make certain children are visible - bright clothing,
- Check out the routes that children may take. If crossing a street with lot's of traffic—such as Tampa Palms Blvd, Compton or Amberly - walking the bike, not riding it ,is the safest.



Compton Swimming Pool Is Bustling With Activity

The warm weather and school vacations make the Compton Park pool THE destination for many Tampa Palms neighbors. Here are a few reminders to help make the pool experience a fun and safe one for all.

The Compton pool is reserved for residents of Tampa Palms Areas. Residents may bring 2 guests per household.

Note: the pool is not available to reserve for parties!

Pool Rules - For The Safety of All

- Children under 13 years must be accompanied by an adult in the pool area.
- **Adults must be IN THE POOL with any child under 8 years old.**
- No more than 65 persons are permitted in the pool area at one time.
- The pool should not be used unless two or more people are present.
- Pool must be closed anytime there is a threat of contamination such as “diaper failures”.
- No running, pushing or horseplay will be tolerated. Violators will be asked to leave the premises.
- No food, beverages or glass containers are permitted on the pool deck.
- Food & beverages are permitted in the pavilion.
- No alcohol or smoking permitted within the fenced pool area.
- No animals, except service animals, are permitted within the fenced pool area.
- No rafts, air mattresses, air rings, balls, buoys, facemasks, snorkels or fins are permitted in the pool. Arm floats, “Noodles” and goggles are permitted
- Personal radios and music device should be kept at a low level so as not to disturb others.
- Shower before entering the pool.
- All bathers must immediately leave the pool area at the first sign of an electrical storm.

Tampa Palms



Pharmacy
www.tampapalmsrx.com

Tampa Palms
PHARMACY

tampapharmacy@gmail.com

Joby Thomas, R. Ph.

15309 Amberly Dr.,
Tampa, FL. 33647

Donald Pound, R. Ph.

OPEN: M-F 9:00 AM - 6:00 PM
SAT 10:00 AM - 1:00 PM

Tel: 813-605-0300
Fax: 813-605-0303



Tampa Palms Has Its Own Pharmacy

A Newcomer To Check Out

Tampa Palms has a new pharmacy conveniently located in the Shoppes of Amberly (15309 Amberly Drive) just to the right of Crunch.

The **Tampa Palms Pharmacy** just opened and boasts a few pretty cool advantages, especially if you or your child is ill, such as:

- **Free Home Delivery**
- **Free Flavoring for Children**

Managed and run by Joby Thomas, R.Ph and Donald Pound, R.Ph. **Tampa Palms Pharmacy** has a number of special offers, designed to help the neighborhood get to know them such as

- Free antibiotics
- \$10 Gift card with transferred prescriptions

Swimming Pool Season Is Here



Pools Are Fun When They Are Safe

There are a lot of pools in Tampa Palms – more than 80% of the homes have a pool or a spa.

Drowning is the most common cause of death for children under four years in Florida. Stunning statistics in Florida reveal that:

- 65% of child drowning occurs in the home pool
- 69% of the child drowning occurs while one or both the parents are responsible for supervision.
- 77% of the children who drowned were seen less than five minutes before they were discovered in the pool.

Create “Layers of Protection” Around Your Pool

Water safety experts recommend “layers of protection”. This is not one solution but rather a full spectrum of strategies with the ultimate goal of preventing pool accidents and drownings.

Hurricane Time Are You Prepared?



June 1st is the start of hurricane season. Hurricanes are powerful storms and Tampa Palms is by no means immune to their effects.

The key is to prepare in advance and have a plan that includes at a minimum:

- Water & non perishable food for at least 3 days
- Flashlights, batteries and portable radios
- Medical supplies, prescriptions and routine medicines

For more information see the 2016 Hillsborough County Hurricane Guide, available online at :

<http://www.tbrpc.org/tampabaydisaster>



L is for **LOCKING** the doors Lock all doors and windows leading to the pool including PET doors. Use Self-Closing AND Self-Latching pool fence gates.

A is for **ALARMS** Installing Door, Window AND Pool alarms is integral to layers of protection.

Y is for **YES to Pool Fencing** Four-sided Pool Fencing provides a physical barrier that helps prevent entry to the pool area.

E is for **EDUCATE** Educate family, friends and babysitters on the pool rules. Make sure all caregivers know CPR and first aid. Teach every member of your household how to swim - the earlier, the better.

R is for **REMOVE** toys Remove beach balls, floats and other toys that could attract children to the water.

S is for **SUPERVISION** **ACTIVE ADULT SUPERVISION** at all times in and around the water. **YOU** are the **BEST** defense against unintentional drowning. Installing layers of protection are safeguards designed to help you supervise children in **YOUR** back yard pool or hot tub.

Protect Your Pets

From Alligators To Coyotes to Owls There Are Predators In Tampa Palms

Tampa Palms is an area that is rich with predatory animals. The varied wildlife that occupies the wetlands and conservation areas is a major part of the charm of the urban/suburban vibe.



Living in an area with non-domesticated animals roaming free requires special attention be given to the care of pets, especially small dogs, and puppies and all cats and kittens - no matter the size.

It was partially for this reason that the TPOA rules do not allow dogs to be kept out of doors unless on a leash held by a responsible person.

Rules That Make a Difference

The Humane Society and Florida Wildlife Commission suggest a few rules to save the life of beloved pets.

1. Never leave a pet out of doors or on a screened porch by itself.

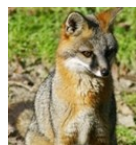
Fences do not protect dogs or cats out of doors. There have been many small dogs and numerous cats lost to predators in Tampa Palms.

2. Never allow a dog on a leash to approach a pond.
3. Never leave food bowls out doors.

Who Are These Predators?

It is a surprise to many to see how many predators are in Tampa Palms. Some just *drop in*, and some live here all the time. All of the following are more than capable of killing a small dog, puppy or kitten if found out of doors.

- | | |
|---------|------------|
| Foxes | Bobcats |
| Owls | Coyotes |
| Hawks | Alligators |
| Bobcats | Snakes |



CDD Plans For 2017

Proposed FY2016-17 Budget Follows Model Introduced Last Year

The Tampa Palms CDD is the only CDD in the area known to utilize multi-year financial model in the decision making process. Future-look financial modeling:

- Brings rigor to the financial planning process.
- Allows board members to examine the future effects of current assessment and spending decisions.
- Protects the community's future boards against any unanticipated financial "surprises".

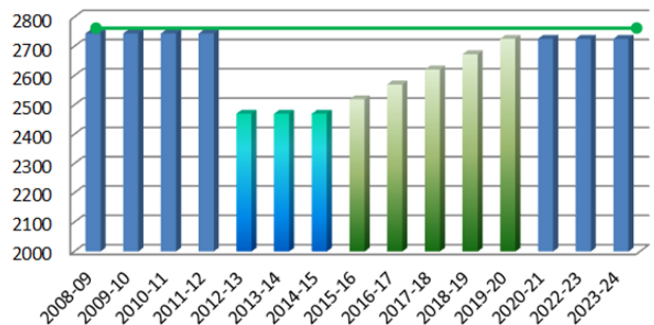
The model directionally endorsed by the Board is for a manageable 2% per year total assessment increase over each of five years, which commenced in FY 2015-16.

This approach will provide necessary revenue to operate the District, while conserving sufficient funds to react to the unplanned challenges from outside - such as the Bruce B Downs widening.

- ◇ Owners will experience modest increases.
- ◇ **At the end of five years (FY 2019-20), total CDD assessed revenue will be slightly less than it was in FY 2008-09.**

This is a directional model, not an adopted plan. Each year the Board approves a budget for the coming fiscal year.

Multi-Year Financial Model



Tampa Palms CDD
FY 2016-17 Budget Hearing
Wednesday, July 13, 2016
6 PM, Compton Park Meeting Room

Getting Ready To Update Your Yard? *“Florida Friendly” Works In Tampa Palms*

Thirty Years Of Continual Improvement

It is almost inescapable - from HGTV to the regulatory authorities like SWFWMD and the City of Tampa, and let’s not forget the market pressure of what home buyers say they want - **Florida Friendly landscape is here to stay.**

The yards with little but lush green (and water hogging) grass outlined with prim little shrub beds along the house are to landscape what avocado-colored appliances are to kitchens or big-hair styles are to class pictures... neat, iconic and so not today.

But what does “Florida Friendly Landscape” (FFL) really mean?

FFL is a set or landscaping principle that focus on

- Conserving water resources
- Minimizing landscape maintenance
- Optimizing use of pesticides and fertilizers

There are many expressions of FFL; many incorporate strategically placed turf, many are exceptionally lush - some far more so than a grass-only yards.

Modern Transitional - Large curving beds around trees, breaking up and reducing turf areas.

Contemporary Urban Chic - Flowering plants interspersed with green shrubs and stone paths or other concept-based elements.

English Garden Formal - Formal, multi-layer greenery laid out in a symmetrical manner .

Butterfly Friendly - Flowering native shrubs, a master gardener’s retreat.



Make Your Yard A reflection Of You

Some owners have called the TPOA to ask if Florida Friendly landscape violates TPOA governing documents. **It does not.**

When planning to modernize your landscape, making it “Tampa Palms ready” is a piece of cake: simply design a plan and submit that plan to the TPOA RMC– as required.

The TPOA will be glad to make suggestions to help you with compliance.

For tips on using Florida Friendly residents can go online:
<http://www.tpoa.net/FFYWorkshop1.pdf>
<http://fyn.ifas.ufl.edu/homeowners/publications.htm>

Tampa Palms Landscape Principles

Attractive & Well Groomed

Weed-Free Beds

Drives and Beds Properly Edged

Foundation Plants Around Home

Trees & Shrubs Cover A Minimum 25% of Front of Home - No Maximum

All Upright Shrubs Minimum 3 Gal At Planting

Hedge Shrubs Minimum 3 Ft At Planting

Hedge Shrubs Planted Minimum 3 Ft On Center

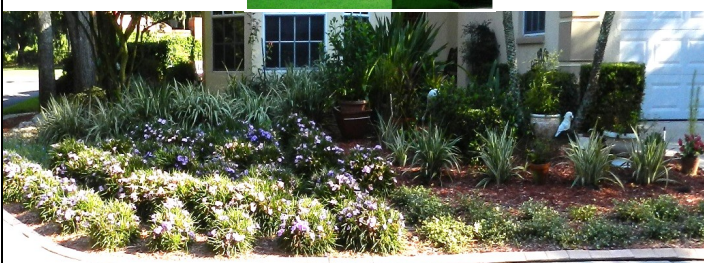
Spreading Shrubs 1 Gal Minimum At Planting

Ground Covers Minimum 4 In Pots 6 In On Center

Areas Not Landscaped With Plants Must Be

Planted With Turf Or Ground Covers or

Feature Attractive Design Elements



There Is No Mistake - Tampa Palms Is Truly

Where Is Tampa Palms Why Is The Names Used So Many Places

The name “Tampa Palms” first appeared as the name of a Development of Regional Impact (DRI) that specified the allowable development for the lands that include three present day communities :

- ◇ Tampa Palms
- ◇ Tampa Palms North
- ◇ TPOST 3



It is not unusual for DRI's to include multiple communities: the DRI for West Meadows includes Richmond Place, the DRI for Hunters Green includes Arbor Greene.

The original developers planned to make all three into a single community but due to lost financing in the early 1990's, were unable to do so and the banks stepped in.

- In the 1990's **Tampa Palms** was mostly completed with resident staffed TPOA and CDD Boards directing the community.
- The northwest section had no development - not even roads - only two brick signs along Bruce B Downs. This area was purchased by Lennar who created the beautiful community of **Tampa Palms North**.
- The northeast section was also undeveloped, with only one brick sign along Bruce B Downs. It was auctioned by the FDLIC and purchased by New Tampa Inc. Today the area is part of the TPOST CDD and frequently called **TPOST 3**.



Community Organizations The CDD & TPOA

There are two organizations that work to provide the lifestyle enjoyed by Tampa Palms residents.

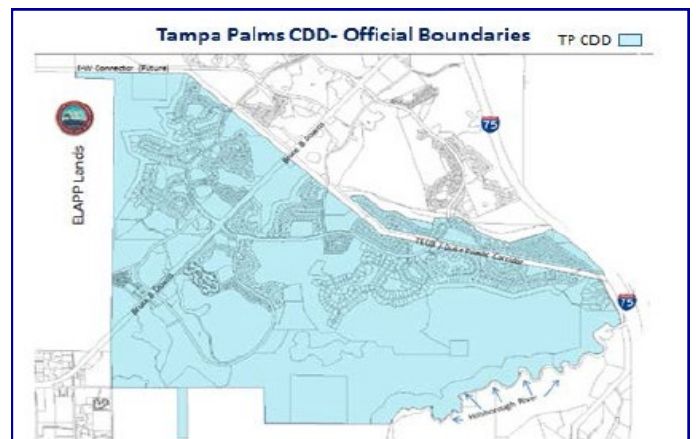
- **The Tampa Palms Owners Association (TPOA)** - owner support services
- **The Tampa Palms Community Development District (CDD)** - infrastructure and maintenance services.

The TPOA is both the standards bearer for Tampa Palms and the organization that coordinates activities for all Tampa Palms facilities, both TPOA and CDD.

Residents have the most day-to-day contact with the TPOA. The TPOA is charged with owner compliance with the Tampa Palms standards, as well as, the use and maintenance of two - and arguably the most important - parks in Tampa Palms, Compton Park and River Park.

The CDD is a unit of special government. It has oversight for the infrastructure in Tampa Palms:

- Landscape along the City-owned ROW's and for the community entries.
- Entry and village monuments with their LED lighting.
- Boulevard fountains
- Pumping stations that irrigate the landscape w/o the use of potable water.
- Drainage ponds to treat the storm drainage before it enters the river.
- On-going permit adherence and re-permitting including State (SWFWMD WUP) and Federal (NPDES).
- Three community parks, Hampton, Amberly and Oak.



One Very Unique Neighborhood

The Tampa Palms Park System Five Unique Parks

Tampa Palms owners enjoy not just a park or two but a full fledged park system that includes five very different parks.

The two TPOA parks are private to only Tampa Palms owners:

- **Compton Park** World class meeting rooms, audio services, swimming pool, and soon to be upgraded tennis courts, and play facilities and brand new pickleball courts.
- **River Park** Riverside beauty with fishing, canoe launching and trails.



The three CDD parks are private to owners but non-owners may purchase annual memberships:

- **Hampton Park** - the athletic center of Tampa Palms with four night illuminated tennis courts, two lighted basketball courts, two night lit racquetball/handball courts, a pavilion with picnic tables and restrooms, and a children’s state-of-the-art playground that includes an EVOS system and cushioning safety surface.
- **Amberly Park** - twelve centrally located acres with restrooms and state-of-the-art playground facilities, lake-side swinging benches, night illuminated jogging trails, a lake fountain and a pavilion equipped for picnicking and grilling.
- **Oak Park** - a maze of trails through a serene and untouched conservation area a typical Florida wilderness. Oak Park is a gopher tortoises sanctuary.



Protecting the Signature Tampa Palms “Brand”

Recently the TPOA Board received a request from an organization to use the “Tampa Palms” brand within their name. The organization is located south of the Tampa Palms DRI area along BB Downs in Hillsborough County.

The request was denied.

It has been the practice of the TPOA to only license the use of the logo to those communities which were developed independently of Tampa Palms but are within the original DRI area (see page 6).

For that reason Tampa Palms North and TPOST 3 both use the Tampa Palms logo and do so with the permission of the TPOA.

The name *Tampa Palms* has substantial value to the owners of Tampa Palms:

- Defines the area where the community is located
- Projects the standards that are the hallmark of the community, as displayed in the meticulous attention to owner property required by the governing documents.
- Calls up the images of the community’s public elements such as the brickwork entries, upscale granite signs and distinctive lighting.



The Tampa Palms name and the iconic palm tree logo have been the property of and in continual use by the TPOA since they were created in the 1980’s .

Both are valuable assets of the community owners.





Compton Recreation Moves Ahead

Big Changes Are Underway

For thirty years Compton Park has been the site of Tampa Palms' "big" recreation, eg the heated swimming pool, illuminated tennis and basketball courts and room for private parties. It also included a small limited access playground with minimal equipment and no safety surfacing except sand (referred to as "the dirt" by many moms).

That is changing.

The TPOA is moving ahead with the park-wide improvements that were presented to the community at the 2016 Annual Meeting:

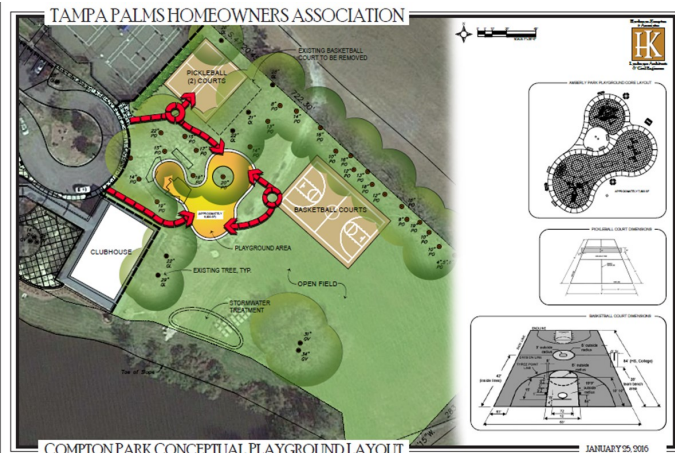
- Upgraded tennis courts
- New pickleball courts
- New basketball courts
- Accessible play areas
- State-of-the-art play equipment
- Clean safety surface

The first construction steps will be the court improvements, followed by the construction for the paths and foundation to support the safety surface and finally the installation of the play equipment.

Jason Rinard of Hardeman Kempton is the designer; and spearheading the project from the TPOA side is the Building Committee, fresh from their work on the new building and remodel of the original building:

- | | | |
|--------------|------------------|-----------------|
| Bill Edwards | Jake Schoolfield | Kristin Mallia* |
| Warren Dixon | Maggie Wilson | Miekie Caris * |
| Jim Soley | Dave Hollowell | |

* Busy mom's who serve as advisors



A New Level of Play

The play equipment is in the final stages of selection and color coordination.

A Venti play system with 20 integrated activities and multiple access points all under twin shade canopies is included.



The Venti system is ADA compliant.

In addition to the Venti system there are plans for benches and a number of "stand alone" activities such as:

- The unique parent and child Swings
- The Omni Spinner
- Triple Ring Fling
- Log Crawler
- Noodle Pods
- Rhapsody Kundu, Kettle and Goblet Drums

Note the colors shown are just illustrative.



A Lasting Gift To Tampa Palms Elementary

Girl Scouts For The Community

Eight young women, members of Girl Scout Troop 966 which meets at Compton Park, recently fulfilled their promise of creating a sustainable project by installing a bike rack for students commuters.



The project was the crowing element of their Journey to the Bronze Award, the highest award that may be attained by Junior Girl Scouts.

Junior Scouts choose an issue they care about, then do something to make a difference as part of a Girl Scout Leadership Journey.

The issue they chose was one of student bicycle safety - both for immediate impact and the long term for the future students of Tampa Palms Elementary.

For immediate impact they researched bicycle and road safety pertaining to school and collaborated with the Tampa Palms Elementary PTA to host a bike/walk information session for parents and students.

For the more sustainable portion of their project they raised money an additional bike rack which is now in place.

Tampa Palms resident Mieke Caris noted that six of the eight girls have been together since they were Daisy Scouts. We can well expect more amazing things from them as they advance through the Cadette, Senior and Ambassador ranks.



Community Director: Jo Ann Conrad Property Manager: Bonnie French

16101 Compton Drive M-F 9 AM - 5 PM

Phone: 977-3337

Fax: 978-8067

E-Mail: tpoamail@aol.com

Web Site: www.tpoa.net

Board of Directors

Bill Edwards, President 972-4238

Warren Dixon, Treasurer 977-3337

Marianne Trubelhorn, Secretary 977-3337

Ernie Munzen, VP 977-3337

Sally Fuson, Dir 977-3337

CDD

16311 TP Blvd. West

Maggie Wilson, Consultant

Phone: 977-3933

Fax: 977-6571

E-Mail: cdd.tampa@verizon.net

CDD Board of Supervisors

Gene Field (Chair) 977-1162

Patty Maney 977-7129

Jim Soley 220-3200

Jake Schoolfield 597-1432

A. Michael Gibson 977-3933

ABM (Landscaping)

Joe Laird, Area Manager 267-1756

Tampa Palms Parks

Compton Park 972-0897

Hampton Park 972-5699

River Park 971-6241

Police & Fire

911

Non-Emergency Police 231-6130

Non-Emergency Fire 223-4211

Local Schools

Tampa Palms Elementary 975-7390

Lawton Chiles Elementary 558-5422

Liberty Middle School 558-1180

Freedom High School 558-1185

Miscellaneous

Street Repairs 622-1940

TECO 223-0800

Progressive Waste Solutions 248-2820

Water Department 274-8121

New Tampa Rec Center 975-2794

Stormwater (Floods or Dumping) 622-1901

Questions About Short Term Rentals

Neighbors Are Becoming Concerned

The TPOA has received numerous questions and complaints about what appear to be short-term rental businesses operating in Tampa Palms and elsewhere.

Vacation rentals are very popular and renters can arrange stays either directly with the owner or through an agency, usually via the Internet.



These agencies are normally very reliable, one popular travel site owns two agencies and another has garnered wide media attention.

But What About Tampa Palms

There are community concerns. Callers to the TPOA have shared such concerns as:

- Loud and late parties.
- Ever changing “visitors” makes neighbors uncomfortable and not what is desirable for a family neighborhood.
- Dogs barking all night (even though the web site says no dogs for one home)
- Garbage cans left out after a stay on days other than “garbage day”.



There may be legal concerns for the folks that consider full time rental of their property.

1. The City of Tampa has preliminarily opined that short-term rentals are not within the approved land use for the PDA zoning for Tampa Palms.
2. The Property Appraiser’s office has confirmed that a home used as a business may NOT be entitled to:
 - A. Homestead exemptions
 - B. “Save out homes” caps on assessed value
3. There are taxes that apply to rentals (sales taxes and the so-called “bed taxes”) and the agencies to whom they are owed might pursue collection.

The TPOA Board and General Counsel are reviewing this matter and it will be discussed at the September General Meeting.

It’s Summer Beware Of The Alligators

Never Feed or Approach - They Are Wild Animals

Tampa Palms was built around thousands of acres of wetlands, rivers and ponds. Alligators have inhabited these areas since well before any development in the area and they continue to live in the waterways and swamps. It is for this reason that swimming, fishing and boating is not allowed in Tampa Palms-owned ponds.

Alligators frequently travel between waterbodies or wetlands. If you see a large alligator, like this fella who a



FWC trapper captured last week, call the Nuisance Alligator Hotline at 866-FWC-GATOR (866-392-4286) or call the CDD or TPOA (977-3933, 977-3337)

A few safety tips


- DO NOT FEED GATORS... REPORT TO THE POLICE ANYONE WHO DOES. Although humans are not generally viewed as prey by alligators, a fed gator is taught to see humans as food.
- KEEP CHILDREN AND PETS away from edges of lakes, ponds, rivers, and all freshwater. It is never safe to play near freshwater in Florida.
- NEVER APPROACH AN ALLIGATOR. Never assume that there is sufficient distance between you and an alligator. In the blink of an eye, an alligator can jump 6 feet into the air from a resting position.





July, 2016 Calendar



SUN	MON	TUE	WED	THUR	FRI	SAT
Tampa Palms Country Club is have a fireworks even July 4th					1	2 10 Private Event 10 Private event 5 Private Event
3 9:30 Private Event 11 Private Event	4  9:30 Private Event 3 Private Event 5 Boy Scouts	5 10 Private Event 1 TPWC Canasta 6 Private Event 6 Girl Scouts	6 9 Private Event 10 Private Event 6 Fly Fishing	7 7PM Faircrest HOA	8 5 Private Event 5 Private Event	9 10 Private Event 10 Private event 5 Private Event
10 9:30 Private Event 3 Private Event 5 Boy Scouts	11 9 Private Event 10 Private Event 4 Private Event 5 Covenants Com	12 10 Private Event 12 Private Event 6 Private Event 7 Nottingham HOA	13 10 Private Event 6 CDD Meeting	14 10 TPWC Bridge	15 10 Private Event 5 Private Event	16 5 Private Event 5 Private Event
17 9:30 Private Event 3 Private Event	18 9 Private Event 6:30 Kensington HOA	19 5 TPOA Board Mtg 6 Private Event 6 Girl Scouts	20 9 Private Event 10 Private Event 10 Sanctuary Board 1 TPWC Canasta	21 10 Private Event	22 5 Private Event	23 10 Private Event 10 Private Event 5 Private Event
24 9:30 Private Event 1 & 3 Private Event 9:30 Private Event	25 9 Private Event 7 Faircrest HOA	26 12 Private Event 5 Private Event 6 Private Event	27 10 Private Event 5 NT ART Group	28 10 TPWC Bridge 4 Private Event	29 5 Private Event	30 10 Private Event 10 Private event 5 Private Event 5 Private Event

AUGUST

First Day School Aug 10th	1 9 Private Event	2 1 TPWC Canasta 6 Girl Scouts	3 9 Private Event 6 Fly Fishing	4	5 5 Private Event	6 9 Private Event 10 Private Event 5 Private Events (2)
7 9 Private Event 9:30 Private Event	8 9 Private Event 4 Private Event 5 Covenants Com	9 12 Private Event	10  10 Private Event 6 CDD Meeting	11 10 TPWC Bridge	12 5 Private Event	13 9 Private Event 11 Private event 5 Private Event 5 Private Event
14 9 Private Event 9:30 Private Event 2 Private Event 5 Private Event	15 9 Private Event	16 1 TPWC Board 5 TPOA Board Mtg 6 Girl Scouts	17 9 Private Event 10 Sanctuary Board 1 TPWC Canasta	18 10 Private Event 4 Private Event	19	20 10 Private Event 5 Private Event 5 Private Event
21 9 Private Event 9:30 Private Event	22 9 Private Event 5 Private Event 7 Faircrest HOA	23 9:30 Private 12 Private Event	24 5 NT ART Group	25 10 TPWC Bridge	26 5 Private Event	27 5 Private Event 5 Private event
28 9 Private Event 9:30 Private Event 12 Private Event 5 Private Event	29 9 Private Event 5 Private Event	30  6 Chess Club	31 9 Private Event 5 Private event			



Tampa Palms Owners Association
16101 Compton Drive
Tampa, FL 33647

PRSR STD
US POSTAGE
PAID
TAMPA, FL
PERMIT #1741

Tampa Palms CDD Meeting & Budget Hearing Agenda

**July 13 at 6:00 p.m.
Compton Park Recreation Building
16101 Compton Drive, Tampa, FL 33647**

1. Welcome & Roll Call
2. FY 2016-2017 Budget Hearing
3. Board Member Discussion Items
4. Public Comments
5. Approval of the June Minutes
6. Approval of District Disbursements
7. Consultant Reports
8. Other Matters
9. Public Comments
10. Supervisor comments
11. Adjourn

CDD Appoints New Supervisor

The CDD Board has appointed A. Michael Gibson (Adi) to fill the vacancy created by the recent resignation of Bill Shimer.

Mr. Gibson is a seven year resident of the village of Sterling Manor, where he has been a member of the board for six years and president of the Board of Sterling Manor for five years. Michael believes strongly in community service:

- ◇ Currently serves on the TPOA Covenants Committee
- ◇ Is a recent draftee to the TPOA RMC.
- ◇ Attended the Mayor's University inaugural class

A graduate of the United States Military Academy at West Point, Mr. Gibson also earned a MA in Strategic Communication and Leadership from Seton Hall.

Believing in and practicing *life time learning*, Mr. Gibson is currently a second year law student at Cooley Law School's Tampa Bay campus .

He was recently been inducted into Phi Delta Phi Legal Honor Fraternity.

<http://myfwc.com/media/152524/Alligator-Brochure.pdf>

<http://edis.ifas.ufl.edu/uw230>