



TAMPA PALMS

NEWSLETTER

JANUARY 2012



It's A New Year With Lot's of Activity and Changes



2012 Will Be A Busy Year

2012 will be a pivotal year for Tampa Palms from many perspectives.

1. New voting districts will represent Tampa Palms citizens on the County, State and Federal levels.
2. One major roadway project moves to completion (BB Downs Segment B-C).
3. Two other major construction projects ramp-up in 2012 (New Tampa Bridge & I 75).
4. The roadway project most affecting Tampa Palms, (BB Downs Segment A), is slated to begin - possibly by year-end. (See article pg 4)

The transportation projects, sorely needed, are well understood thanks to on-going and regular briefings by County Staff and support, when needed, from the team of Steve Daignault at the City.

Are the political changes equally well understood? Well not so much! There is a lot on the table:

- A major political convention will take place in Tampa
- 2012 is a presidential election year.
- The County Commission district which serves Tampa Palms has been redrawn and elections will be held this Fall.
- The Fla House and Senate Districts, along with the US Congressional District which serve Tampa Palms are in the process of being redrawn, opening questions as to who will seek to represent Tampa Palms and the final make-up of the “new” districts.

The TPOA will do what it can to bring timely information to our residents. If you have questions, call the TPOA and Jo Ann or Bonnie will help find the answer or the expert who can help. **Remember it is OUR government; to make it work well requires actionable information.**

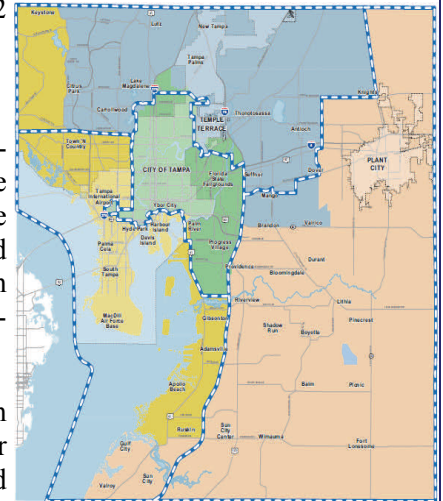
County Commission Boundaries Changed For 2012

The 2011 changes to the County Commission Districts add two areas to District 2 (Tampa Palms):

- Brandon
- Valrico

The changes also remove a portion of the Keystone area. The changes were adopted by the Commission and await DOJ approval.

District 2 is shown in blue with the prior boundaries indicated by the heavy dotted lines.



“Your Tampa” Coming Soon....

Linking citizens to their government is a vital part of a well-working government. The City Chief of Staff's (Santiago Corrada) Neighborhood & Community Relations provides just that link.

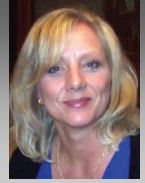


Shannon Edge, Manager of Neighborhoods & Community Relations, has agreed to facilitate a “Your Tampa Meeting” for the citizens of Tampa Palms.

Shannon can bring together critical staff to discuss first hand City services and answer “how to” questions from roadways, to recreation to police protection. Tentatively the date will be late first quarter, more information will be coming soon.



News From the TPOA



TPOA Annual Meeting of the Village Voting representatives is scheduled for January 26, 2012, 7 PM at Compton Park. One voter representative for each village attends the round-table which is open to all owners in Tampa Palms.

This year's meeting will feature among other things:

- Review of financial options for Compton Meeting Room Addition
- Election of directors from three sub-districts who will serve for the next two years.



Directors are elected by the Voting Members who are in turn elected by the villages within each Voting District.

Voting Members must be owners or their official alternates who must be owners. Proxies are not allowed per the TPOA documents.

This year there will be election for Directors from two of the five voting districts:

- District 2 Current Representative: Dr. Marianne Trublehorn
- District 3 Current Representative: Bill Edwards

Note: the TPOA Annual Meeting is private to the owners of Tampa Palms. Those renting in Tampa Palms, owners in neighboring communities and members of the press may join the TPOA for our numerous public events or attend the public CDD meetings but not the TPOA annual, budget or board meetings. (This is true for all similar HOA's.)

Other matters for discussion by the community include preparing Tampa Palms for the emerging laws concerning HOA's and the state of Tampa Palms in this volatile housing market.

A Word About Voting

2012 will be a year filled with changes and challenges.

Citizens exercising their rights to vote will make all the difference in how these changes affect the quality of life in Tampa Palms.

Tampa Palms alone (without its neighbors of TPOST 3 or TP North) is poised to exercise its considerable impact from both the number of citizens eligible to vote and tax dollars paid. Let's use it in 2012.

- Original Tampa Palms, the area of Tampa Palms CDD and TPOA, contains 4,000 homes, ranging from estates to apartment homes.
- Tampa Palms property values for 2011 equal \$636 Million Dollars- 99% vote rich residential.

The TPOA does not presume to tell citizens for whom they should vote and will never endorse a particular candidate. It will however do all it can it help citizens know where and when they can exercise their right to vote. **It does matter.**

A special note: New Tampa AM Rotary (see page 6) announced that Mayor Buckhorn of Tampa will speak to the group about his plans for New Tampa at the Jan 13 meeting.

The Rotary meetings are private so citizens cannot attend except as a guest of a member but if you are a member or know a member who will invite you as a guest, this is a unique opportunity, especially as there are no longer Town Hall Meetings scheduled in New Tampa.

Shining Cleaning Services

Residential & Commercial
Licensed, Bonded and Insured

The Higher quality...
cleaning service.

FREE ESTIMATES

Maria A. Torres

Office (813) 882-8998



ED MORSE

Cadillac

101 East Fletcher Ave.
Tampa, FL 33612
813-968-8222 Phone
813-785-7411 Cell

gemma carr@edmorse.com
www.edmorsecadillastampa.com



Gemma Carr
Sales and Leasing Consultant

Tampa Palms Women's Club Closes the Year With Caring & Springs Into 2012

Tampa Palms Women's Club held its traditional potluck charity luncheon at Compton Park in December.



Visitors from the local schools as well as representatives from the many community-based organizations supported by the TPWC joined together for the general meeting followed by a wonderful feastfull of treats straight from the members' kitchens.

This annual event is directed entirely on the prime focus of the TPWC- helping those in need right here in the community.



Many members brought gifts for children in need in our schools, Chiles and Tampa Palms Elementary.

Donation checks were given to the following extraordinary charities:

- *House of Hope*
- *OASIS *Rich House*
- *Kids & Canines *Gods Pedal Power.*

The members heard heartbreaking and endearing stories about how these donations are used for those less fortunate. It makes all the hours of work fundraising worth it.

Officer Installation

The Tampa Palms Women's Club installation of Officers for 2012 will be held at a luncheon at the **Tampa Palms Country Club on Jan 19th.**

Luncheon will feature a Caesar salad with a choice of chicken or salmon for \$18. Please make reservations by Jan 17th. You may leave your check in the Women's Club box at Compton Park

February 2nd Meeting

The February General meeting will be held Feb 2nd at Compton Park.

Start Planning Now

The TPWC Annual Community Yard Sale & Bake Sale is on for 2012!



Compton Park
March 31, 2012
9 AM Until 11 AM



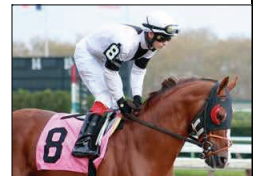
This is a unique opportunity to sell unwanted treasures and scan the tables for goodies you may want to take home All in the safety of Compton Park, not your own home.

The featured speaker will be **Christy Reile, of Halo Academy.** Christy is the President and Founder of HALO Academy.

Christy will discuss the very special and unique school that is Halo Academy and most important - the treasured child who made it all possible.

It's Off To The Races

Feb 16 the group heads to the track for a buffet lunch and an afternoon of racing fun. Make your reservations!





Keeping Tampa Palms On Track During Construction



Largest Single Roadway Project In The County

Tampa Palms *should* see the start of the BB Downs widening project for the Tampa Palms section in 2012. (City utility relocation projects actually began in 2011)

In an on-screen interview with Channel 8, Hillsborough County spokesman, Steve Valdez, said that the BB Downs project was **“the largest single roadway project that the County has ever undertaken”**.



That may be true but BB Downs *is only a portion* of the transportation work in the area. For the next 4-5 years Tampa Palms will be surrounded by the muss and mess of multiple transportation construction projects, including:

- The BB Downs widening,
- The New Tampa Bridge construction
- The I 75 Bridge over BB Downs
- I 75 Widening from Fowler to SR 54.

There is no doubt that left unchecked, the “view” of Tampa Palms from a construction-bound BB Downs will be less than complimentary. Equally there is no doubt that many of our neighbors will use internal Tampa Palms roads to by-pass the roadway work.

The value of Tampa Palms will depend on the degree to which the community can address and mitigate the challenges of multi-year construction.

The mission for Tampa Palms, as defined by the CDD Board, will be to:

- Reduce to the degree possible the manner in which ambiance of Tampa Palms is affected during the many construction projects.
- Make certain that all the entries into the community display the fact that Tampa Palms is a vibrant community which is “open for business”.
- Develop options to “brand” Tampa Palms post construction

Tampa Palms has an action plan, well underway, to make certain that during the area-wide construction everything possible will be done to maintain community value by presenting Tampa Palms in the best possible light to outsiders and keeping Tampa Palms a livable neighborhood.

Tampa Palms “Open For Business”

It is known that the entry medians for both Area I and Area II will also be shortened during the BB Downs construction.

Preliminary plans show a minimal impact on the Area I median but far greater changes planned for the Area II median.



The design experts of Hardiman Kempton are working with the CDD to develop plans to properly display the entries both during construction and after– including the new pond site.

At the Jan 11th CDD meeting Jason Rinard of Hardiman Kempton will preview proposals to improve the main entry lighting using low cost, high performing LED lighting. Similar lighting has been used in the new landscape lighting... see below



Lighting and Landscape Upgrades For “Back Doors”

Many who “cut through” Tampa Palms may never see its graceful main entries, only the back doors of

- Wellington/Hampton Park from the NW or
- Wyndham/Enclave from the NE.



Lush landscape, a new *state-of-the-art* park very visible from Tampa Palms Blvd and LED night lighting prominently announce that Tampa Palms is a very desirable place to live.





Tampa Palms Elementary Greet's The New Year!



From Tampa Palms Elementary Principal, Ms Keenan,

Happy 2012! We are looking forward to the second semester of the 2011-2012 school year!

Thank you for your support in working with the teachers and administrative staff to help create the very best possible foundation for your child's academic success!

There are some important dates just around the corner. Please mark your calendars for this very important testing information.

- FCAT Writing Grade 4 Feb 28-Mar 1st
- SAT-10 Grades 1-2 March 26-April 6th
- FCAT/NRT Grade 3, 4, 5 April 16- April 27th

FCAT Explorer

Ms. Keenan strongly encourages all of the Tampa Palms students in grades 3-5 to compete the FCAT Explorer challenge program for their grade.

Students in grades 3 and 4 work on FCAT Reading and students in grade 5 work on FCAT Math and Science. Please contact Ms. Roberta Bogdanoff, our computer lab coordinator if you need assistance accessing FCAT Explorer at home.

FCAT Explorer is an innovative online program created by the Florida Department of Education—and it's free!

Packed with cool graphics and lots of FCAT-like questions, FCAT Explorer helps prepare students for the standards tested on the FCAT. It includes grade-specific programs in reading, math, and science.

Just as important, because this program is available online, parents can be involved with the test preparation. For more information on FCAT Explorer go to <http://www.fcatexplorer.com/home.asp>.

TPE Is Well Represented At The District Science Fair

A special congratulations to the following the students who will be representing Tampa Palms at the district level Science Fair on February 7th and 8th at the Convention Center.

Individual Projects

<i>Student</i>	<i>Teacher</i>
<u>Brian Valdiviezo</u>	Ms. Weinstein
<u>Enrique Cortes</u>	Mr. Oliver
<u>Paul Catalano</u>	Mr. Oliver
<u>Sierra Eckhardt</u>	Mr. Oliver
<u>Kurt Rodriguez</u>	Mr. Oliver
<u>Andrew Balmaseda</u>	Mr. Oliver



Group Projects

<u>Dantae Marchman, Darnell Ellison, & Celeste Foreman</u>	Ms. Sollenberger
<u>Mackenzie Altheimer & Fred Armington</u>	Mr. Oliver
<u>Lily Farzaneh & Isabella Park</u>	Mr. Oliver
<u>Susan Morales & Jennie Mullen</u>	Mr. Oliver



Class Projects

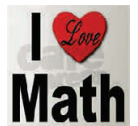
- Ms. Gephart's Class
- Ms. Garcia's Class



Grade 5 Math Bowl Superstars!!!

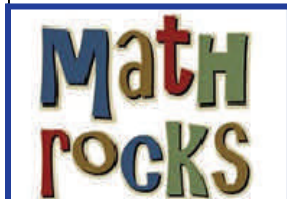
Tampa Palms is thrilled to announce that our fifth grade Math Bowl team:

- Andrew Balmaseda Austin Cahn,
- Truman Hoang Olivia McCabe
- Kaden Okin



won first place in the Area 3 Math Bowl Competition on December 8th.

The team will go on to the District Finals on Friday, January 13th. We wish out team the very best of luck at the District Finals.



A very special thanks to Ms. Cindy Israel, TPE's fifth grade Math Bowl Coach, for volunteering her time and her talents to coach this great team!





New Tampa Morning & Evening Rotary



New Tampa AM Rotary's regular weekly club breakfast meetings are held on Friday mornings at 7:00 AM in the Banquet Hall at the Tampa Palms Golf and Country Club, 5811 Tampa Palms Blvd. The club president is Tampa Palms resident Matt Palmer.

Upcoming speakers include:

Jan 9 Ram Kancharla, Charter Member of the New Tampa Evening Rotary and Sr. Director, Planning & Development, Tampa Port Authority. Ram will speak on development of the Port of Tampa.



Jan 13 Tampa Mayor Bob Buckhorn
Mayor Buckhorn will update members on the road construction on Bruce B Downs and his plans for the New Tampa community.



Jan 20 James J Mule,
Executive Vice President, and Associate Center Director for Translational Research, the Michael McGillicuddy Endowed Chair for Melanoma Research and Treatment, and the Director of Cell-Based Therapies at H. Lee Moffitt Cancer Center & Research Institute.



Jan 27 Nancy Ziel, R.N., MBA
Administrative Director of Satellite Operations for Moffitt Cancer Center at International Plaza. Ms Ziel will discuss this innovative care option which was recently implemented by Moffitt.



Below are pictured some of the honorary members voted by the New Tampa AM Rotary for this year. Honorary status is conferred on those who have consistently served the club and its events. Notably Tampa Palms residents Judy Alkow and Debby Amon are shown front and center.



Community Director: Jo Ann Conrad
Property Manager: Bonnie French

16101 Compton Drive M-F 9 AM - 5 PM
Phone: 977-3337
Fax: 978-8067
E-Mail: tpoamail@aol.com
Web Site: www.tpoa.net

Board of Directors

Bill Edwards, President 972-4238
Jake Schoolfield, Vice-President 998-2620
Barbara Shimer, Secretary 971-8063
Dudley Bryant, Treasurer 977-7630
Marianne Trubelhorn 977-3337

CDD

16311 TP Blvd. West
Maggie Wilson, Consultant
Phone: 977-3933
Fax: 977-6571
E-Mail: cdd.tampa@verizon.net

CDD Board of Supervisors

Gene Field 977-1162
Patty Maney 977-7129
Andy Miller 979-0225
Randy Marlowe 866-1091
Bill Shimer 971-8063
One Source (Landscaping)
Joe Laird, Project Manager 267-1756

Tampa Palms Parks

Compton Park 972-0897
Hampton Park 972-5699
River Park 971-6241

Police & Fire

911

Non-Emergency Police 231-6130
Non-Emergency Fire 223-4211

Local Schools

Tampa Palms Elementary 975-7390
Lawton Chiles Elementary 558-5422
Liberty Middle School 558-1180
Freedom High School 558-1185

Miscellaneous



Street Repairs 622-1940
TECO 223-0800
Waste Management 621-3053
Water Department 274-8121
New Tampa Rec. 975-2794
Stormwater (Floods or **Dumping**) 622-1901



Activity Calendar



JANUARY- 2012

SUNDAY	MONDAY	TUESDAY	WEDNESDAY	THURSDAY	FRIDAY	SATURDAY	
1 New Year's Day Parks Closed Parks Closed	2 Holiday- Parks Open TPOA & CDD Closed 9-11 Private Event	3 6-9 CHESS	4 10-12 Private Event 1-2:30 Gentle Yoga 3-5 Private Event 6-9 Fly Fishing	5 10-2 Women's Club	6 5-10 Private Event	7 11-4 Private Event 6-10 Private Event	
8 9-12 Private Event 1-6 Private Event	9 9-11 Private Event 12-4 Private Event 6:30-8 Boy Scouts	10 9-12 Children Music 12-4 Les Girls Art 6-9 CHESS	11 10-12 Private Event 1-2:30 Gentle Yoga 3-5 Private Event 6 PM CDD Meeting	12 10-2 Women's Club Bridge  5-8 Private Event	13 9-12 Children Music 5-10 Private Event	14 11-4 Private Event	
15 9-12 Private Event 2-7 Private Event	16 No School- Dr. MLK Day 9-11 Private Event. 12-4 Private Event	17 9-12 Children Music 1-3 TPWC Board	18 10-12 Private Event 3-5 Private Event	19 3-8 Private Event	20 9-12 Children Music 4-8 Private Event	21 11-4 Private Event 5-10 Private Event	
22 9-12 Private Event 12:30-6:30 Private Event	23 9-11 Private Event 6:30-8 Cub Scouts 7-9 Faircrest HOA	24 9-12 Children Music 12-4 Les Girls Art 6-9 CHESS	25 10-12 Private Event 1-2:30 Gentle Yoga 3-5 Private Event 6-9 North Tampa Arts	26 10-2 TPWC Bridge  7 PM TPOA Annual Meeting	27 9-12 Children's Music	28 5-10 Private Event	
29 9-12 Private Event 2-5 Private Event	30 9-11 Private Event 12-4 Private Event	31 Election: Presidential Preference Primary		No School Jan 16 & Jan 17			Important Dates Dr M L King Birthday Jan 16 (Fed) Presidential Pref Primary Jan 31

FEBRUARY, 2012

			1 10-12 Private Event 1-2:30 Gentle Yoga 3-5 Private Event 6-9 Fly Fishing	2 10-2 Women's Club	3 9-12 Children's Music	4 9-1 Private Event	
5 9-12 Private Event	6 9-11 Private Event 12-4 Private Event	7 Valentine's Day 9-12 Children's Music 12-4 Les Girls Art 6-9 CHESS	8 10-12 Private Event 1-2:30 Gentle Yoga 3-5 Private Event 6 PM CDD	9 10-2 Women's Club Bridge	10 Fair Day 9-12 Children's Music	11 10-4 Private Event 5-10 Private Event	
12 9-12 Private Event 1-6 Private Event	13 9-11 Private Event. 12-4 Private Event 6:30-8 Boy Scouts	14 9-12 Children's Music 12-14 Les Girls Art 6-9 Chess	15 10-12 Private Event 1-2:30 Gentle Yoga 3-5 Private Event	16	17 9-12 Children's Music 5-10 Private Event	18	
19 9-12 Private Event	20 President's Day 9-11 Private Event. 12-4 Private Event 6:30-8 Boy Scouts	21 9-12 Children's Music 1-3 TPWC Board 6-9 Chess TPOA Board	22 10-12 Private Event 1-2:30 Gentle Yoga 3-5 Private Event 6-9 N Tampa Arts	23 10-2 Women's Club Bridge	24 9-12 Children's Music 5-10 Private Event	25 8:30-12 Private Event 12-3 Private Ev. 5-10 Private Ev.	
26 27 9-12 Private Event 3-7 Private Event	27 9-11 Private Event. 12-4 Private Event 7-9 Faircrest HOA	28 9-12 Children's Music 12-14 Les Girls Art 6-9 Chess	29 10-12 Private Event 1-2:30 Gentle Yoga 3-5 Private Event	No School February 10 "Fair Day"			Important Dates President's Day Feb 20 (Federal)



Tampa Palms Owners Association
16101 Compton Drive
Tampa, FL 33647

PRSR STD
US POSTAGE
PAID
TAMPA, FL
PERMIT #1924

Tampa Palms CDD Meeting Agenda

January 11, 2012 at 6:00 p.m.
Compton Park Recreation Building
16101 Compton Drive, Tampa, FL 33647

1. Roll Call
2. Pledge of Allegiance
3. Strategic Planning
4. Public Comments
5. Board Member Discussions
6. Project Updates
 - LED Landscape Lighting Phase II
 - BB Downs Update
 - Tampa Palms Ponds
7. Misc. Board Business
8. Public Comments
9. Board Member Discussions
10. Adjourn

Presidential Preference Primary

For Tampa Palms citizens registered as Republicans, the January 31st election will be the first opportunity to express an opinion on the candidate for the US President.

There are many ways to vote:

- By US Mail
- Early voting
- At your normal voting place.



Vote By Mail provides a convenient and secure voting option, and is available to all qualified, registered Hillsborough County voters. To request a Vote By Mail (Absentee) ballot, simply go on line to <http://votehillsborough.org/?id=48>

Early voting begins Jan 16th and ends Jan 28th. Voting procedures are the same as on Election Day but a voter may cast a ballot at any Early Voting Site, not just their own precinct.

There are numerous Early Voting Sites around town, the closest to Tampa Palms is the **New Tampa Regional Library**, 10001 Cross Creek Boulevard

Voters must be a registered Republican to be eligible to vote in this presidential preference primary.