



TAMPA PALMS Newsletter

TM

Newsletter Dec 2007

The Vision Continues

The Tampa Palms CDD Supervisors Review Village Sign Options

While *most* of the current village signs use a blue tile and gold letter combination, the signs are very different in design from one another and any final selection will require a design that compliments all options.

Current village signs include monuments that are:

Narrow with a high sign face



Wide with a high sign face

Wide sign face that is low to the ground



The supervisors agreed that village differences should be celebrated and that the final design must address the different layouts and sign locations.

Ms Maney noted that with the continuing drought, the announcements coming from SWFWMD and others as regards watering restrictions, monument signs emerge as one of the only strategies to add “pop” to entrances with small bedding areas.

Hardeman-Kempton Present Alternatives

The design team of Ted Kempton and Jason Rinard discussed a number of options– all incorporating some elements of the option selected last month for the main entrance signs.



They opted for a sign that added dimensionality to the signs as shown above, with forward mounted brickwork and sign panel. The sign includes the gentle arch of the main entrance signs and black granite with etched letters.

The board requested a modification of that design to reduce the height of the panel and center the lettering, more in keeping with the main entrance designs.



Hardeman Kempton will expand these design options and submit them for review at the December 12th CDD meeting.

Tampa Palms Welcomes Our New Community Director



It's official... Tampa Palms nabbed Jo Ann Conrad from the City!

In October Jo Ann joined the Tampa Palms team as our much needed community director.

Jo Ann assumes the reins for the day to day management and overall operations of the TPOA organization, as well as, the coordination of the

broadly defined Tampa Palms Park Program and Community Center.

Jo Ann's areas of focus are almost too numerous to detail:

- Acts as an advocate for residents, determining needs and directing residents to the proper resources to meet those needs.
- Serves as the primary interface between the community and the Board so that the Board is apprised of community needs and of any enhancements in services needed to meet resident requirements.
- Assists President and Board in communications with the media.
- Supports a formal communications program that includes the community's newsletter, bulletin boards and web site by contributing topics, suggesting subject matter for inclusion and developing alternate mechanisms for communication to keep Tampa Palms informed of issues and activities.

Tampa Palms was very fortunate to recruit Jo Ann: she was a valued member of the Mayor's Neighborhood and Community Relations team which acts as a liaison between the community and city government and provides a point-of-contact to all citizens.

Prior to her City assignments, Jo Ann served the Greater Tampa Chamber of Commerce as a special events planner and coordinator where she designed and implemented scores of programs from Annual Small Business of the Year Award event, to the much heralded Disney's Keys to Excellence program and many more.

Jo Ann with her Navy husband, has lived, worked and raised her now-grown children in such interesting places as Hawaii and Korea.

Now Jo Ann brings her special skills in communication and client services to Tampa Palms. Please give her a call to welcome her.



TAMPA PALMS TRAVELWORLD



*Hire a specialist for
your next dream vacation!!*



Cruises · Tours · Unique Vacations ·
Travel Management

www.travelworld1.com
(813) 978-0877

Monday - Friday 8:30am - 5:30pm
Saturdays Seasonally

Millican Electric LLC

Lic EC13003666

7 Year Tampa Palms Resident

732-2988



Chiles Elementary

Carnival games, cake walks, prizes and pony rides were part of the fun Nov. 10 when hundreds turned out for the Chiles PTA's annual Fall Festival.

Festival-goers enjoyed inflatable rides and slides, face painting and a bounty of festival fare, including home-baked good, and, new this year, grilled hamburgers and hotdogs by The Dad's Club. Parents and students also bid on special teacher offerings during a silent auction.



Second-graders at Chiles Elementary School are participating in a study of classic children's fairy tales in preparation for the upcoming Fairy Tale Bowl Nov. 30.

Upon completion of the unit study, a qualifying test will be given to determine which students know the 10 selected fairy tales the best. Four students with the top scores from each second-grade class will compete in the bowl. Students will also present songs and skits from the fairy tales. The event will be held in the Media Center.



Award-winning children's book author Michael Shoulders will visit K-2 students Tuesday, **Dec. 4**, in the Chiles Media Center.

Shoulders is the author of many popular picture books, including *1 Mississippi*, *2 Mississippi*, *Count on Us*, and *M is for Magnolia*. During his presentation, he will use magic and humor to discuss the importance of writing, his work, and how a book is made. Parents are invited to attend.



Tampa Palms Elementary

The opening ceremonies for the veterans day celebration were led by TPE's very own TPE Pack 360 cub scouts. Pack 360 awarded medals to the school nurse Lori Winter and Master Sgt. Diego Velasquez (Coach V).



Master Sergeant Velasquez addressed students at the Veterans Day Celebration and presented the school with a certificate and flag that was flown over Iraq by him personally as he served his last tour of duty there.



Volunteers Wanted! Tampa Palms is looking for a few good volunteers. Volunteers in Learning (VIL) is a tutoring program at TPE that provides additional assistance to students in reading and/or Math. Anyone with a desire to help a child can be a tutor. If you are interested in becoming a volunteer tutor, please contact Laura Phifer or Lisa McHale at 975-7390.





Chem-Dry of Orlando
Drier. Cleaner. Healthier.®
Tampa Chem-Dry

Ishmael Shirley
Owner/Office Manager

- Pet Urine Removal that WORKS!!
- Safe & Non-Toxic
- Deep Carbonated Cleaning
- Upholstery Cleaning
- Oriental Rug Cleaning
- Dries in 1 to 2 Hours
- No Dirt Attracting Residue
- **24 Hour Water Damage Restoration**



Now Available!
Tile & Stone Care
Clean and Seal Service

P.O. Box 160004
Altamonte Spring, FL 32716
Serving:
Orlando 407-324-8010
Tampa 813-205-8468

Independently owned & operated



State Farm®
Providing Insurance and Financial Services
Home Office, Bloomington, Illinois 61710

Ardeshir K Khorsandian Ins Agy
Adi Khorsandian, Agent
20752 Center Oak Drive
Tampa, FL 33647-3466
Bus 813 991 4111 Fax 813 994 9411



Sensible Water Use— Not Water Restrictions

The drought continues, in Tampa Palms and across much of the country, but even after the rains return water availability will continue to be a serious issue in this area for several reasons:

- Limited sources
- Continued population growth.

The watch word for Tampa Palms is not water restrictions, it is sensible water use.

The Tampa Palms CDD is moving in multiple directions:

- Micro or low volume irrigation trials for key areas
- Replacement of thirsty turf with “water wise” ground covers
- Focus on architectural elements to establish “wow factor” as opposed to the use of plant materials— see monuments page one.

Micro Irrigation. New and emerging irrigation technologies are producing micro irrigation system that deliver water to the plant while reducing or eliminating evaporation .



Ground Covers The CDD’s Supervisor Maney states that one strategy for long-term landscape improvement is the use of ground covers to replace turf.



Ground covers such as Asiatic jasmine pictured on the left, form a thick green mat and can flourish in the deep shade such as in the medians along Tampa Palms Blvd and have the benefit of reducing the need for fertilizers, pesticides, and especially irrigation.

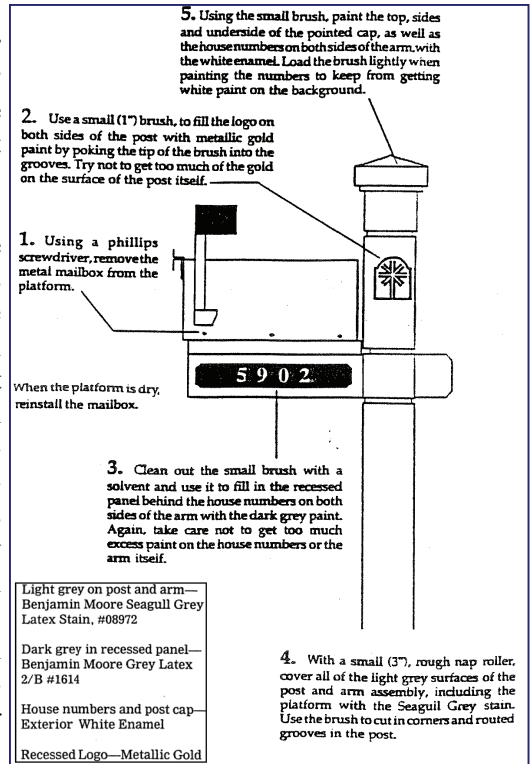
Tampa Palms Mailboxes

Tampa Palms has specific mailbox standards. A copy of restoration instructions to this standards is available from the TPOA office (and shown below).

A company that worked with the residents of Tampa Palms for many years has been sold and purchased by another firm, *Creative Mailboxes*. They advise that they have the TP standards and will continue to serve Tampa Palms. Unfortunately they are located in Oldsmar.

Creative Mailboxes can be reached at 818-7100.

Creative Mailboxes is a source for mailbox repair but the TPOA has no special arrangements with any mailbox company. The TPOA is reviewing other options.



Anyone who follows the restoration standards can repair a Tampa Palms mailbox.

Liz DeAmbrose/Gene Perez

Selling your home is easy. Just call Liz or Gene at 956-6487.

COLDWELL BANKER 19026 Bruce B Downs Tampa, FL 33647
 Fax: (866) 514-4392 homenet@gte.net

Unique Homes of Tampa .com

Georg & Luz Maria

VON GREIFF
 Providing you with world-class service.
 813.842.2119

Real Estate Consultants
 www.UniqueHomesOfTampa.com
 www.vonGreiffRealEstate.com

Services in English . Spanish . German . Portuguese

KELLER WILLIAMS

TAMPA PALMS WOMEN'S CLUB CELEBRATES TWENTY YEARS IN THE COMMUNITY

2007 has flown by- marking the 20th year for the TPWC. Over the last twenty years we have made so many new friends, some have moved away others are still active members. We also have many members that are with us through the winter months (a.k.a. "Snow Birds") and leave us temporarily for the summer.



Regardless of their residential status it is usually this time of the year that our attendance is at its maximum. Everyone brings to the group their uniqueness and willingness to donate their time when needed for various fundraisers that allows the organization to give back and support our community.



The Arts and Crafts Under the Palms was a tremendous success due to the outstanding efforts of the committee and volunteers – not to mention the continued support of the community and local

businesses.

Our 2007- Holiday Brunch and 20th Year Celebration will take place on December 6th at Compton Park. This is the reason for our fashion shows and Arts and Crafts and other fund raising efforts and this event really jump-starts the Holiday Spirit for everyone leaving attendees with a true sense of Goodwill towards Man.



Pictured here is a "belle of a fashion show" and the OASIS representative Ginger Bean during the 2007 presentations.

This year the club presents checks to the extraordinary organizations that support our community:

Everyday Blessings,
God's Pedal Power,
Kids & Canines,
OASIS Network,
PACE,
RICH House and
Wheels of Success.

Members provided gifts for less fortunate students attending Tampa Palms Elementary and Lawton Chiles Elementary schools.

We will all celebrate with a delicious potluck meal provided by TPWC members completed this memorable event. Join us, you will be glad you did. Information may be obtained by calling Mrs. Audrey Bartley at 971-3294.

Don't Forget



Bowling - Gutter Gals meet Mondays at Noon. Contact Phyllis Randorf at 977-0129

Bridge - 2nd & 4th Thursdays at 10:00am - meet at Compton Park. Contact Phyllis Morgan at 977-2424

Garden Club - Call Barb Badow for information at 972-4168

The Women's Club is open to all women residing in Tampa Palms Areas II III IV&IV. The not for profit club is social and philanthropic oriented. General business meetings with informative and entertaining programs are held the first Thursday of the month at Compton Park. A group activity is scheduled for the third Thursday of the month.

Please call Audrey Bartley at 971-3294 for more information.



Rotary Club of New Tampa

Our regular weekly club breakfast meetings are held on Friday mornings at 7:00 AM in the Banquet Hall at the Tampa Palms Golf and Country Club, 5811 Tampa Palms Blvd. Our schedule for future club events, their dates, meeting times and speakers is listed below.

November 30. The speaker will be Jesse Collins, medical health counselor who will discuss "Stress Management". Jesse has a private counseling practice to provide individual, couples and family counseling in Tampa.

December 7 – Lon Lynn, DO: "Extending Medical Service to Treasure Beach, Jamaica". Dr. Lynn has a Family Medicine practice in Tampa. He also has extensive experience in overseas medical work in Africa and in the Western Hemisphere. He will describe a new project he is promoting for Jamaica.

December 14 – The Annual Mort Manatee Holiday Breakfast meeting... at Mort Elementary School.



December 21 – William J. Flynn III, Esq., International Practice Group-Immigration, Fowler White Boggs Banker. PA. He will explain "Immigration Law Enforcement on Employers"



January 4 – Rolfe G. Arnhyrn, President and CEO, Arnhyrn & Associates. Rolfe's topic will be "My Experiences at This Year's Forbes CEO Conference." The conference was held February 26-28, 2007 in Doha, Qatar.

January 11 – Steve Ibson, FBI Agent in Charge, Tampa Office. Steve will discuss "FBI Issues in the Tampa Bay Area".

Professional and business leaders who live, work or have retired in the New Tampa Area may be eligible for membership in the New Tampa Rotary Club. For further information about our club visit our website at www.newtamparotary.org or contact Matt Palmer at 972-9235 or matt.palmer@earthlink.net.

TPOA Manager Bonnie French

16101 Compton Drive

Phone: 977-3337

Fax: 978-8067

E-Mail: tpoamail@aol.com

Web Site: www.tpoa.net

Board of Directors

Bill Edwards, President 972-4238

Joseph Caetano, V-President 977-1145

Barbara Shimer, Secretary 971-8063

Dudley Bryant, Treasurer 977-7630

Ernie Angelilli, Director 875-3800

CDD

16311 TP Blvd. West

Phone: 977-3933

Fax: 977-6571

E-Mail: cdd.tampa@verizon.net

CDD Board of Supervisors

Gene Field 977-1162

Patty Maney 977-7129

Andy Miller 979-0225

Randy Marlowe 866-1091

Bill Shimer 971-8063

One Source (Landscaping Contractor)

Joe Laird, Project Manager 267-1756

Aaron Toli, District Manager 918-8124

Tampa Palms Parks

Compton Park 972-0897

Hampton Park 972-5699

River Park 971-6241

Police & Fire 911

Non-Emergency Police 231-6130

Fire 223-4211

Local Schools

Tampa Palms Elementary 975-7390

Lawton Chiles Elementary 558-5422

Liberty Middle School 558-1180

Freedom High School 558-1185

Miscellaneous

Street Repairs 274-8055

TECO 223-0800

Waste Management 621-3053

Water Department 274-8121

DECEMBER 2007

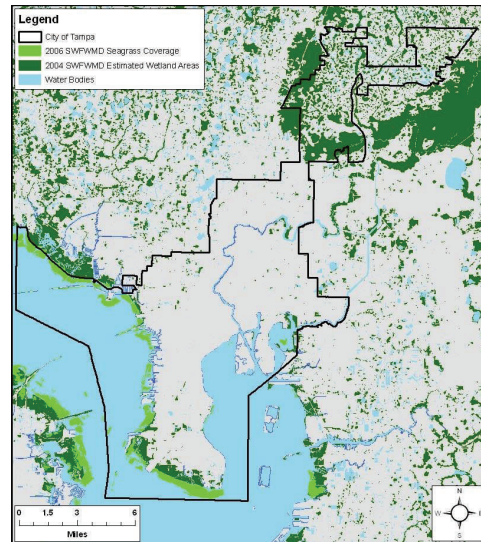
| Sun | Mon | Tue | Wed | Thu | Fri | Sat |
|-----|--|--|---|--|---|-----------|
| | | | | | | 1 |
| 2 | <p style="text-align: center;">4 PM TPOA RMC</p> <p style="text-align: center;">5 PM Covenants Committee</p> | <p>6 PM Tampa Palms Chess</p> <p>11-2 Art Group</p> | <p>5</p> <p>6 PM Fly Fishing</p> <p>1:15-2:15 YOGA</p> | <p>6</p> <p>9-2 AM Woman's Club Holiday Luncheon</p> | <p>7</p> <p>9-11 Am Music</p> <p>2-4:30 Girl Scout Troop 495</p> | 8 |
| 9 | | <p>11</p> <p>11-2 Art Group</p> <p>6 PM Tampa Palms Chess</p> | <p>12</p> <p>1:15-2:15 YOGA</p> <p>6:30 pm CDD Board Meeting</p> | <p>13</p> <p>10 AM TPWC</p> | <p>14</p> <p>9-11 Am Music</p> <p>2-4:30 Girl Scout Troop 495</p> | 15 |
| 16 | <p style="text-align: center;">4 PM TPOA RMC</p> | <p>18</p> <p>1 PM Woman's Club Board</p> <p>6 PM Tampa Palms Chess</p> <p>5 PM TPOA</p> | <p>19</p> <p>1:15-2:15 YOGA</p> <p>2:15- 7 PM Mom's Club</p> | <p>20</p> <p>6:30 Boy Scouts Den 11</p> | <p>21</p> | 22 |
| 23 | 24 | <p>25 Compton Park Closed</p> <div style="text-align: center;">  </div> | <p>26</p> <p>1:15-2:15 YOGA</p> <p>7 PM North Tampa Art</p> | <p>27</p> <p>10 AM TPWC</p> | <p>28</p> | 29 |
| 30 | 31 | <p>Jan 1 2008</p> <p>Compton Park Closed</p> | | | | |

CDD AGENDA
December 12, 2007 at 6:30 p.m.
Compton Park Recreation Building

1. Roll Call
2. Pledge of Allegiance
3. Hardeman-Kempton Vision 2011 Update
4. Strategic Planning
5. Public Comments
6. Board member discussion items
7. Management Updates
8. Public Comments
9. Board member discussion items
10. Adjourn

Did You Know?

Hillsborough County has 101,000 acres of wetlands. The City of Tampa has only 7,500 acres and 95 % of the City wetlands are in New Tampa— with 3,000 acres in Tampa Palms alone.



The wetlands and conservation areas in Tampa Palms are crucial to the use and enjoyment of our homes. The Hillsborough County EPC has done an excellent job in protecting our wetlands, many of which would *slip-through-the cracks* of State management as “too small” or be delegated to those who have no stake in their preservation.