



# Tampa Palms CDD

May, 2022



# Agenda

- Roll Call
- 2022 Focus
- Board Member Discussion Items
- Public Comments
- Consultant Reports
- Other Business
- Public Comments
- Board Member comments
- Adjourn

# Strategic Planning

## *Focus 2022*

### Tampa Palms Blvd Restoration

	Next Steps	Timing
(1) Help Community Communicate Needs	2 <sup>nd</sup> Public Meeting w/ City	Jun-Jul
(2) Hold Balance of Signature	Determine Impact on Entries	On Going

### Monitor Projects in Tampa Palms

(1) Wetland Destruction	EPC Consent Requirements	Monitor
(2) Possible DRI Changes	Engage City and CDD Counsel	April-May
(3) Bike Path Improvements	Deferred Until TPB Project Designed	Review After TPB Designs

### Monitor Issues Impacting Tampa Palms

(1) Inflation & Personnel Impacts	Review Cash Management w/ Bank	May, 2022
(2) Hart Advertising	TPOA Managing	June, 2022

### Monitor County Commission Races Impacting Tampa Palms

(1) CDD Board Seats 1 & 2		Nov 8, 2022
(2) Tampa Palms' County Commissioner		
(3) Hillsborough County At Large Commissioners (2)		
(4) Numerous State Offices		



# Board Member Discussion

The CDD Public meetings are the only opportunity that Board members have to discuss community issues between themselves. This time is set aside for Board Member discussions.



# Public Comments

The Public is encouraged to speak on any matter, on or off the agenda.

There will be another opportunity for public comments at the end of the meeting.

*Members of the public may speak on any District matter, on or off the agenda, as long as the matter is germane to and within the jurisdiction of the CDD.*

*In the event a group should wish to speak on the same subject, the group should select no more than five representatives who will individually be recognized by the chair and speak for no more than three minutes each on the issue.*



# Approval of Minutes

The Board will review and approve the April, 2022 Board Meeting minutes.



# Approval Disbursements

Each month as part of the Board oversight responsibilities, the Board approves the CDD disbursements.

Disbursements for the month ending March 31, 2022 were \$ 267,186.56



# Consultant Reports

Neighborhood Updates

Tampa Palms Investment Strategy

FY 2020-21 Budget Planning

2022 Election Cycle

Sunshine Laws

Illegal Construction

Advantage : Paths & Trails

Continuing Traffic Concerns

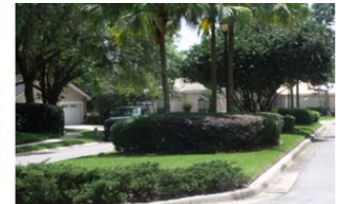


# Neighborhood Updates



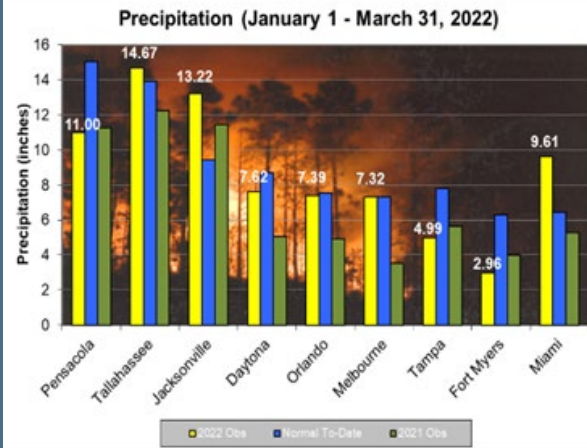
## Landscape Plays A Role

- Meets Residents Needs
  - Maintains Sense of Normal
  - Visible & Welcoming
  - OLM Inspection 93.5
- Contributes To Owner Value
  - Often Owners' Major Asset

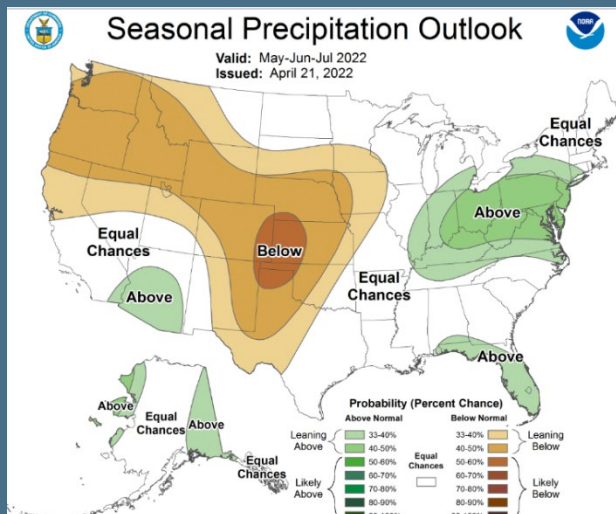


# Neighborhood Updates

## Rainfall Picking Up



- Rainfall Unpredictable
  - Jan-Mar 50% of Normal
  - May Improved
- Why A Concern
  - Wildfires / Fuel Load
  - Pests (Chinch Bugs)
  - Effect On Landscape
- National Weather Service
  - Wet Summer Forecast



# Neighborhood Updates

## *Ponds*



- Ponds Are Low
  - Facilitates Review
  - Address Silt / Muck
- Manchester Pond
  - “Island” Visible
  - Dredged Out Muck
  - Muck Was Leaves
- Deposited Into Storm Drains
  - From Neighborhood
  - ? Landscapers
  - Hard To Control

# CDD Investment Strategy

## *Reducing Owner Costs SAFELY*

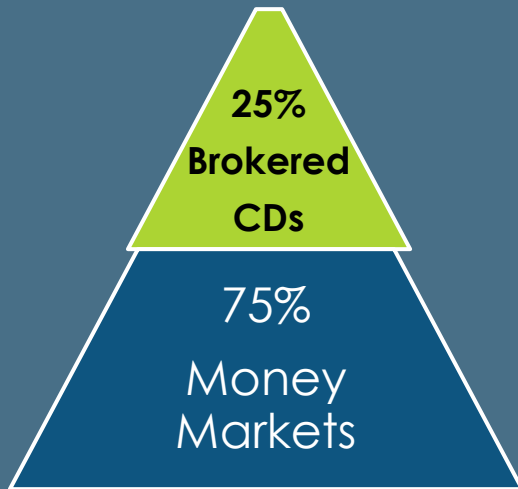
- What Is “Excess Cash”
  - Funds Received in Dec for Year
  - Reserve Allocations
- Why Invest
  - Supplement Owner Assessments
- Requirements For Investments
  - 100% Safety of Funds
  - Investments Limited to
    - FDIC Money Markets
    - FDIC Brokered CDs
    - Invested Via a QPD<sup>1</sup>

<sup>1</sup> State of Fla Qualified Public Depository



# CDD Investment Strategy

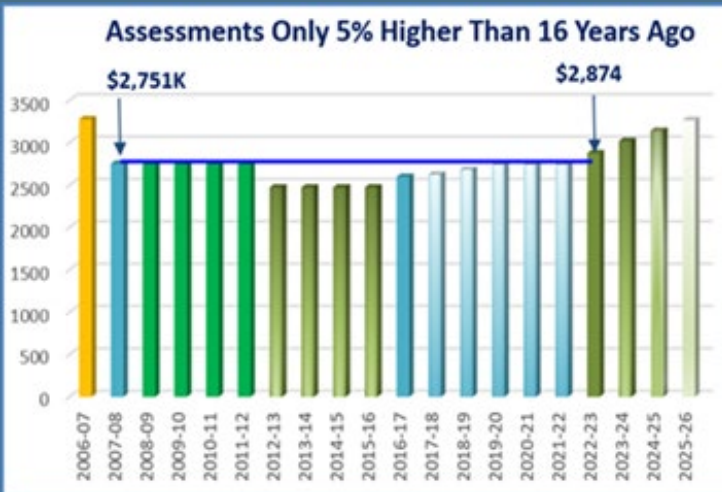
## *Tampa Palms Investment Plan*



- Select A QPD- SouthState Bank
  - State Approved
  - Local Offices
- Two Tier Approach
  - 75% of Funds FDIC MM
    - Earning .5%
    - Avail On Demand
  - 25% Brokered CDs
    - 1 Year Maturity
    - 1.1 > 1.55% Earning
- Monitored Monthly By Board

If The Board Agrees, Plan Should be Approved By Motion of the Board

# FY 2022-23 Budget Planning



- Proposed Budget Adjusted For Current Conditions
- Reflects Financial Model
  - Carryforward Used To Moderate Increase
  - Overall 5% Increase
- Once Noticed, 2022-23 Budget
  - Can Be Reduced
  - Cannot Be Increased

# FY 2022-23 Budget Planning

## *Setting The Public Hearing*



- Proposed Date 7/11/22
  - Two Newspaper Notices
  - Letter To Each Owner
- Notice To County Due Now
- Board Approves Resolution 2022-4
  - Adopt Proposed Budget
  - Sets The Hearing Date

# General Election

## *November, 2022*

- Multiple State Offices
- Important Local
  - School Board
  - County Commission (3 Seats)
- Two CDD Supervisor Seats
  - Seat 1 Field
  - Seat 2 Diaz
- Supervisors To Approve a Notice of the CDD Election

Board To Approve Resolution 2022-5



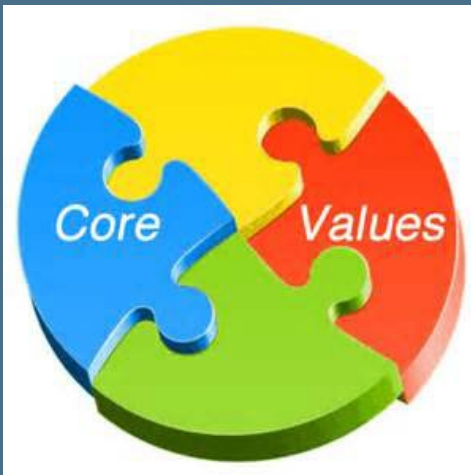
ELECTIONS

2022



# Sunshine Laws & CDDs

## *Operational Reminders*



### **Other Than At Noticed Meetings**

- Board Members On CDD Matters
  - No “Outside” Conversations w/ Other Supervisors
  - No Emails Between Supervisors
- Be Wary on Social Media
  - Available To Other Supervisors
  - No Blocking “Dissenters”
- Non-Board Members
  - Acting as conduit between board members **Verboten**

# Illegal Construction

## Jurisdiction Evaluated



The western most pond: this pond was inspected for wetland jurisdictional determination as follows:

1. Hydric soil was found on the south edge of the pond in the area noted as uplands.
2. The canopy near the edge of the pond was looked at. There are live oaks mixed in with FACW species. Arguably the canopy is < 80% B test.
3. The area near the edge of the pond was looked at for hydrologic indicators. The area has above grade hurricane high indicators, but no normal pool indicators. The current ground water table is approximately 2-3' below grade and we are in the rainy season and surface water exists in the deeper wetlands.

Additionally, 1.) Dillion Reves had a Lidar aerial that shows the area somewhat high.

2.) The site has other areas that are only moderately disturbed and could be flagged as uplands.

3.) The evidence where the pond was dug is gone (trees, ect)

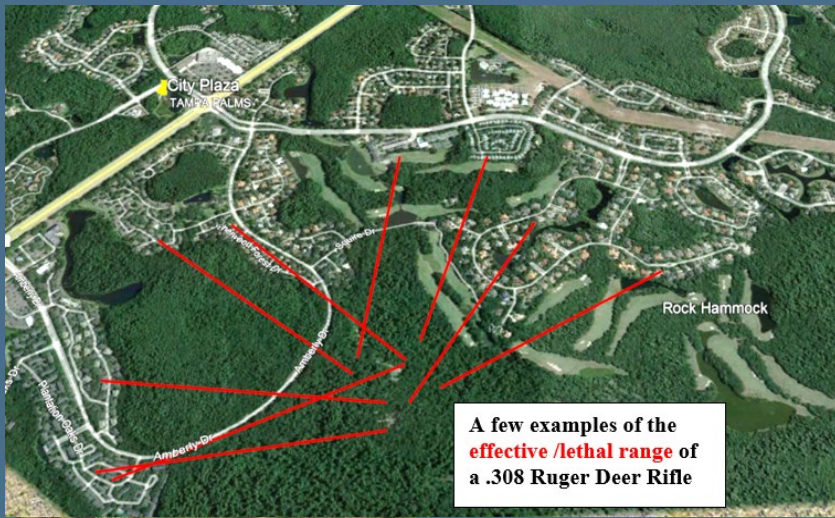
Conclusion: there is not enough convincing evidence to change the line on this pond.

The site was documented with a site sketch and photos that are part of this report.

PHOTOS TAKEN:  Y  N

#### OVERALL COMPLIANCE RATING:

- NO VIOLATION     SUBSTANTIALLY IN COMPLIANCE     MINOR NON-COMPLIANCE  
 SIGNIFICANT NON-COMPLIANCE



A few examples of the effective /lethal range of a .308 Ruger Deer Rifle

- Est 1,000 Acres Along River
  - Described In DRI
    - Conservation
    - Preservation
- Commenced 2020- No Permits
  - Dredged Channels (? Drains)
  - Raised Roads
  - Ponds
  - Hunting Items (Feeders/Blinds)
- City & EPC Engaged
- CDD Lawyers Evaluating
  - CDD Jurisdiction Re DRI
  - CDD Jurisdiction Re Hunting

# Tampa Palms Trails & Paths

## *Community Advantage*



- Sidewalks Tampa Palms -18.5 Miles
  - Both Sides Village Streets
  - Boulevards & Parks
  - Along BB Downs
- Connections Via BB Downs
  - Tampa Palms North & TPOST
  - South - USF & Advent Hospital
  - North - Shoppes at Wiregrass

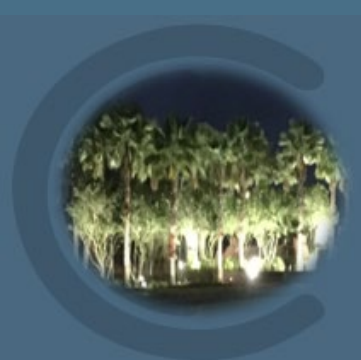


# Traffic Accidents

## *Continuing Concern*

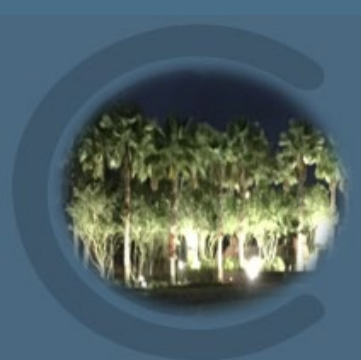


- Imprudent Driving
  - Sometimes Outrageous Speeds
  - “Me First” Behaviors
    - Around the Schools
    - Pulling Out Of Villages
  - Often Distractions
    - Texting
    - Phone
- Improvements Help But Not Cure
  - Paving TP Blvd
  - Improved Crosswalks



# Public Comments

The public is encouraged to speak on any matter, on or off the agenda



# Board Member Discussion

This final time is set aside for  
Board Member discussions.

# Adjourn

